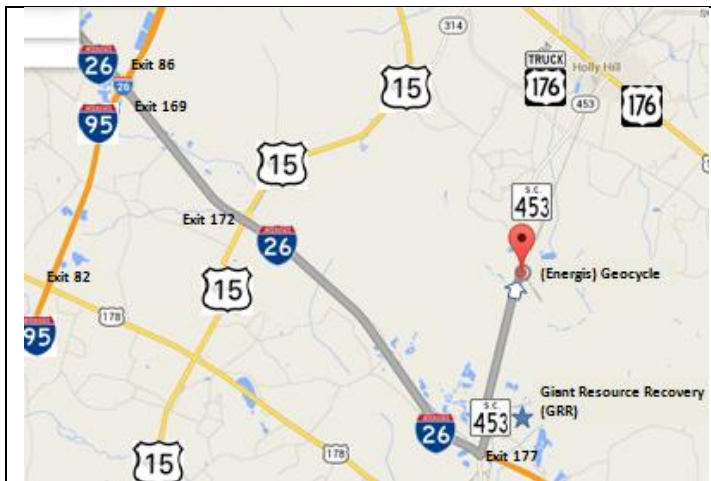
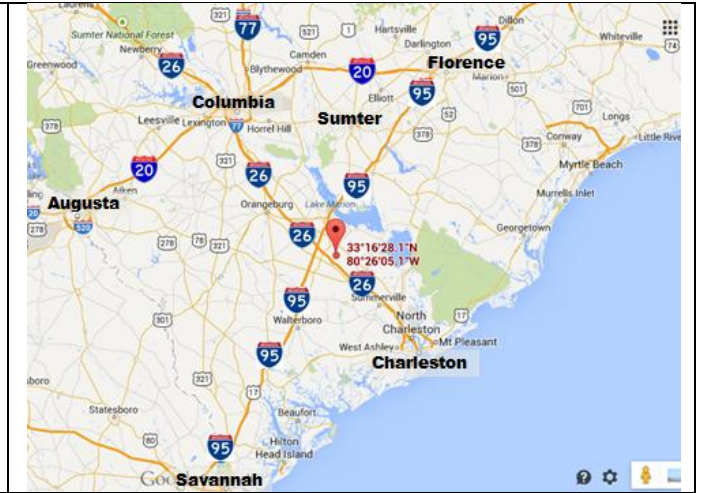
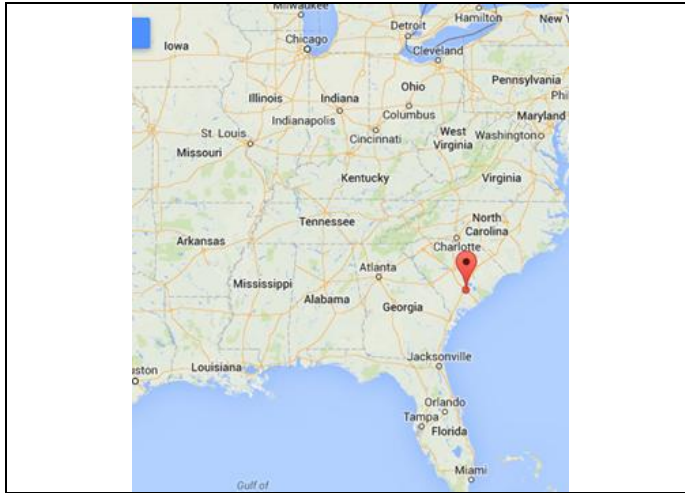


(Energis) Geocycle

2175 Gardner Blvd
 Holly Hill, SC 29059
 33.274486, -80.434753



From: SC I-26 East Exit 177

L	N	SC-453	3.1	RHS

The white arrow in the map to the left shows the position of the white arrow in the picture below it.



You will see the Holcim symbol and that is your entrance.

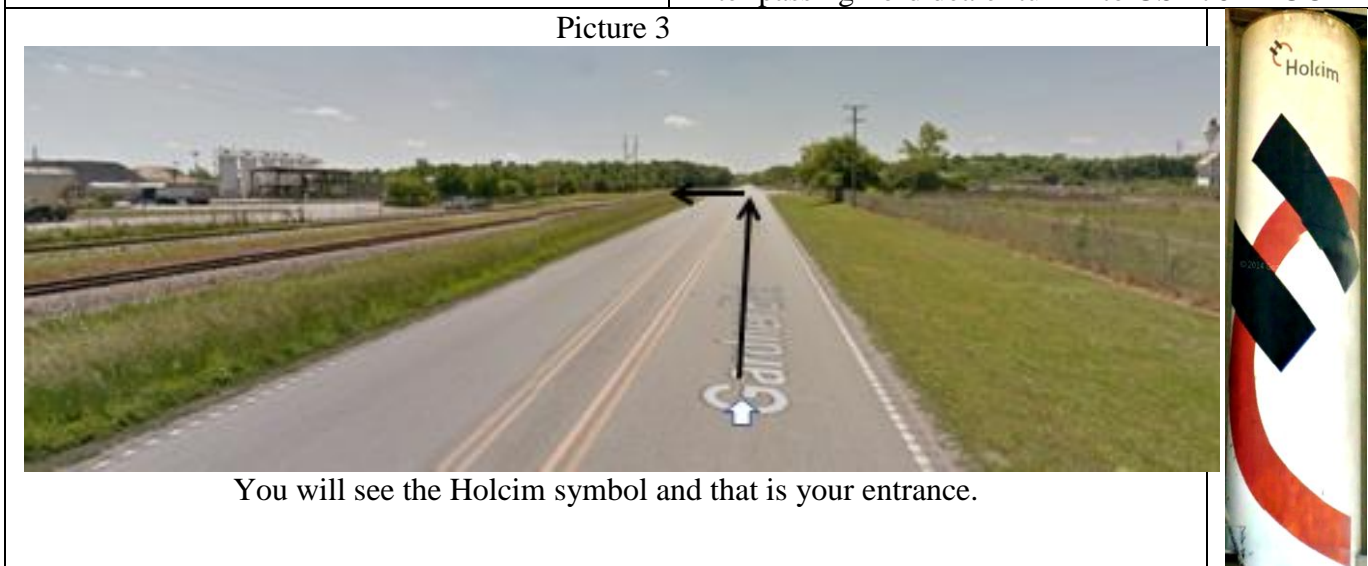




From: SC I-95 South Exit 93				
L	S	US-15	3.2	LGT
	SL	E	US-176	4.6
R	E	US-176 TRUCK	2.2	SS
	R	S	SC-453	2.5

No trucks through the town of Holly Hill. Take the US-176 TRUCK bypass. As shown on the map, there is a Ford dealer on the left and a Boyd's furniture store on the right. The next road on the right isn't marked well but it's the US-176 TRUCK route that you need to take.

The above map has white arrows that correlate with the arrows in the pictures below. The numbers represent the picture number that contains that corresponding arrow.



(Energis) Geocycle

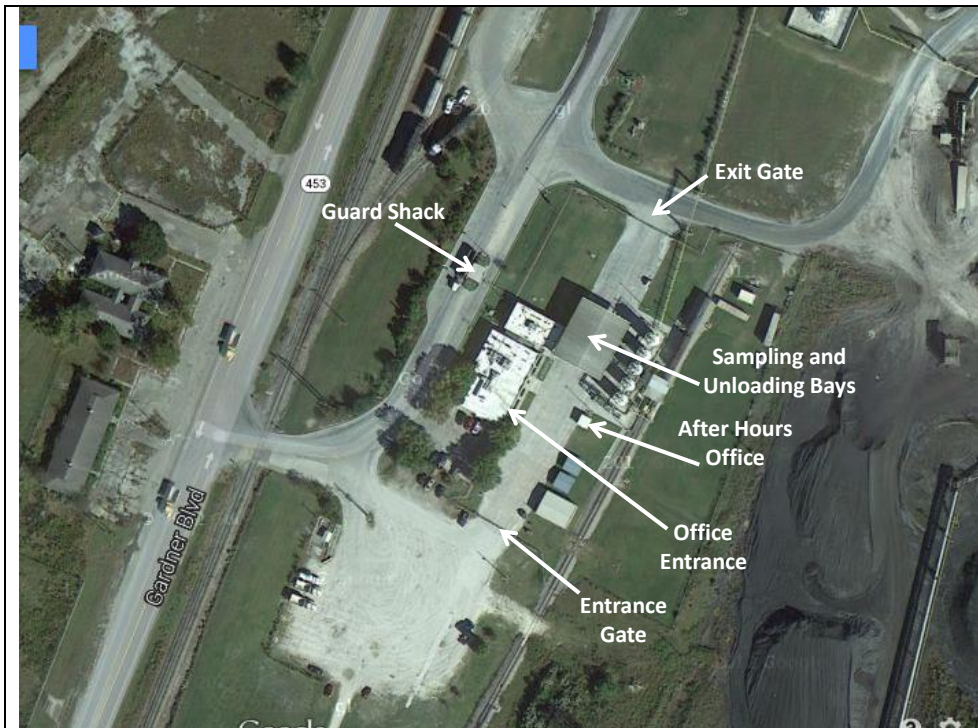
2175 Gardner Blvd
Holly Hill, SC 29059
33.274486, -80.434753



1. To enter the facility you cross an active rail road track so be careful and go straight to the guard shack.
2. After the guard grants access go to the scale.
3.
 - a. If you have a CB call the guard and tell them you're from STC, scaling in, and your truck number.
 - b. If you don't have a CB the guard will come out of the shack and wave you forward.



1. After scaling pick up your scale ticket at the Guard Shack.
2. Drive to the entrance gate and park.



1. Go into the office and give them your paperwork.
2. They will give you instructions from there.



1. When entering the first gate you will be directed where to park or drop your trailer. After dropping your trailer go out the exit gate back around the guard shack and back to the Entrance gate.
2. When they are done unloading reconnect and go to the scale again.
3. After scaling take the scale ticket to the office.