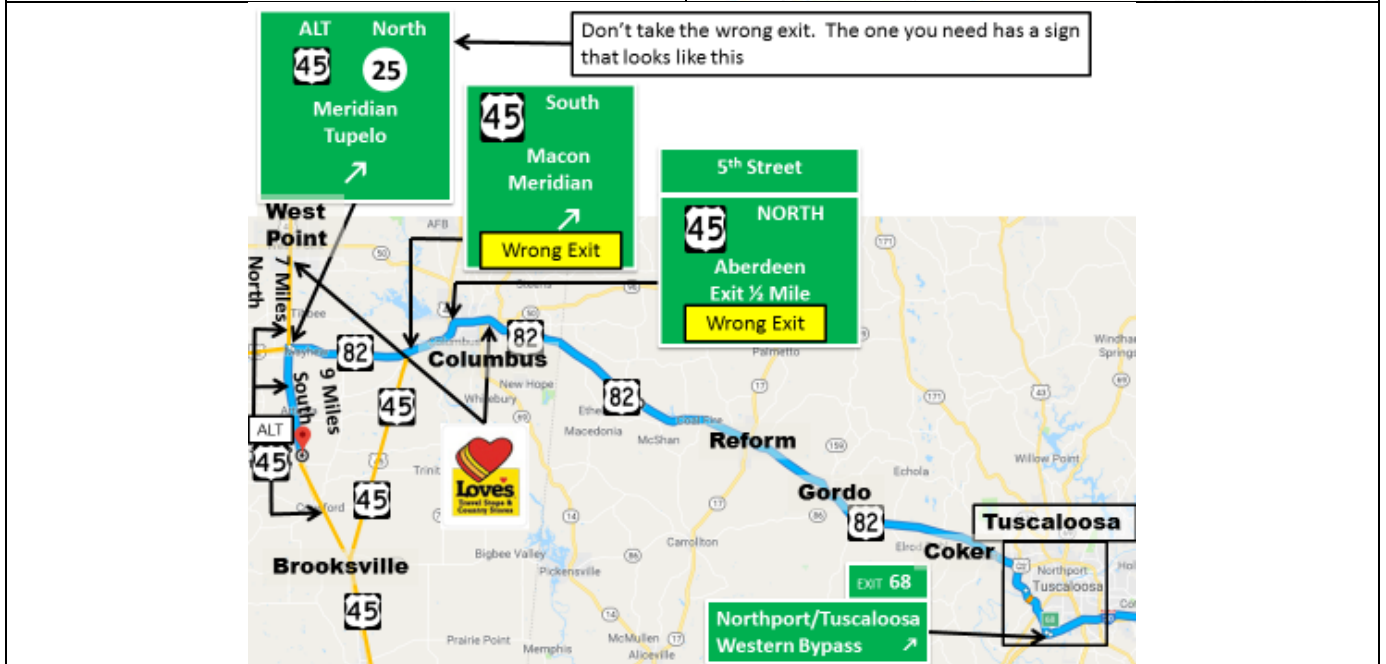


Holcim (US) Inc. Geocycle, LLC

8677 HWY 45 South Alternate

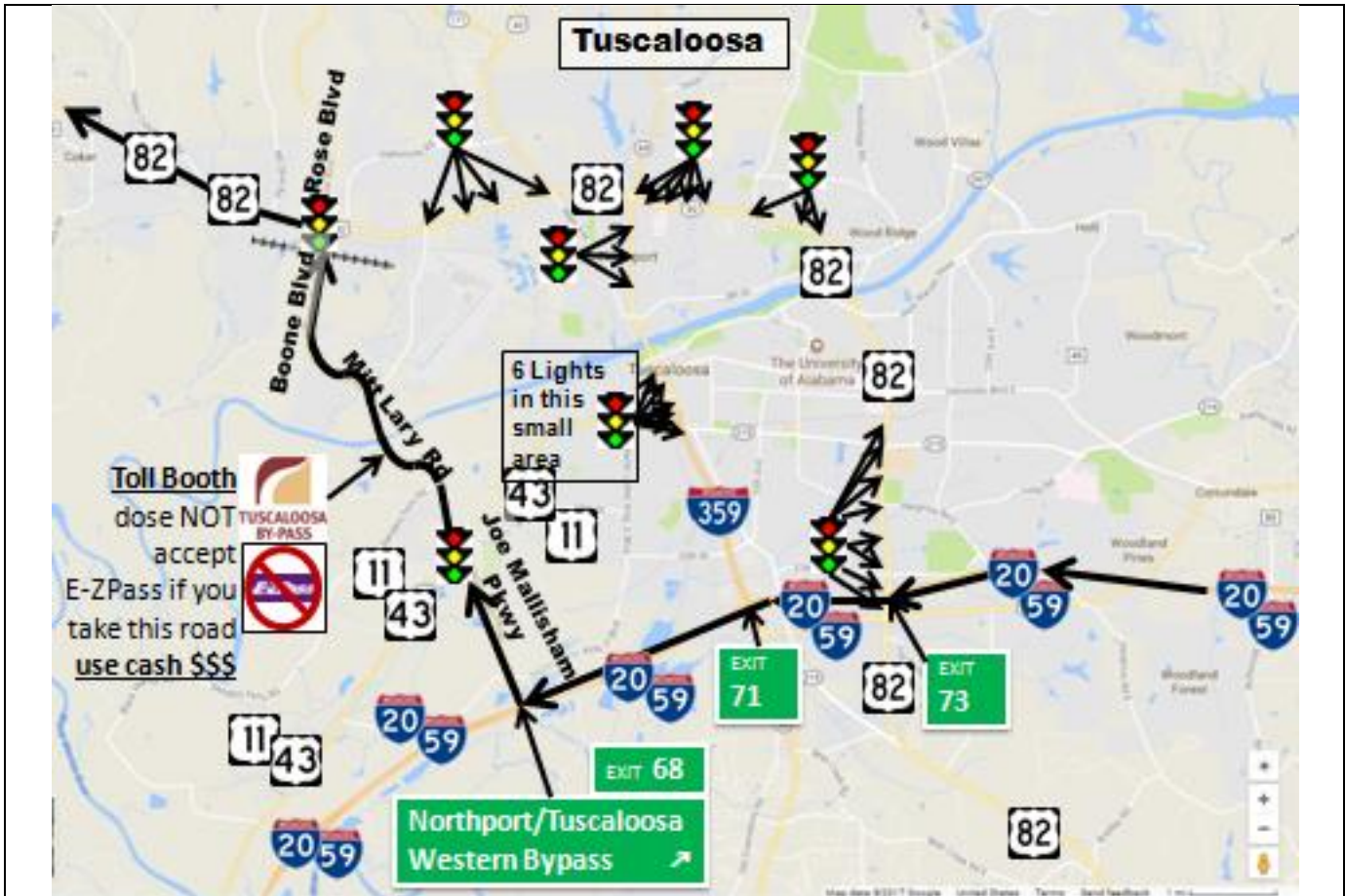
Artesia, MS 39736

33.362370, -88.640006



1. As you can see from the directions on the rite getting to the customer is simple, but the way I suggest has a toll booth that doesn't accept E-ZPass. Bring cash. On 12-15-17 tuscaloosabypass.com says \$9.00 both ways.
2. The boxed in area of Tuscaloosa on this map has a more detailed map on the following pages.
3. Columbus MS and West Point MS each have a Loves truck stop that's easy to find. Columbus's Loves is at the MS-50/MS-12 Exit. West Point's Loves is on Alt US-45 itself just 7 miles north of US-82. This Loves is ~15 minutes from the customer.

Alabama I-20 West / I-59 South Exit 68			
South of Tuscaloosa			
ST	Joe Mallisham Pkwy	}	6.5
ST	Mitt Lary Rd		
ST	Boone Blvd		
L	McFarland Blvd		
L	W US-82	66.1	Exit
L	S Alt US-45	9	On the Left

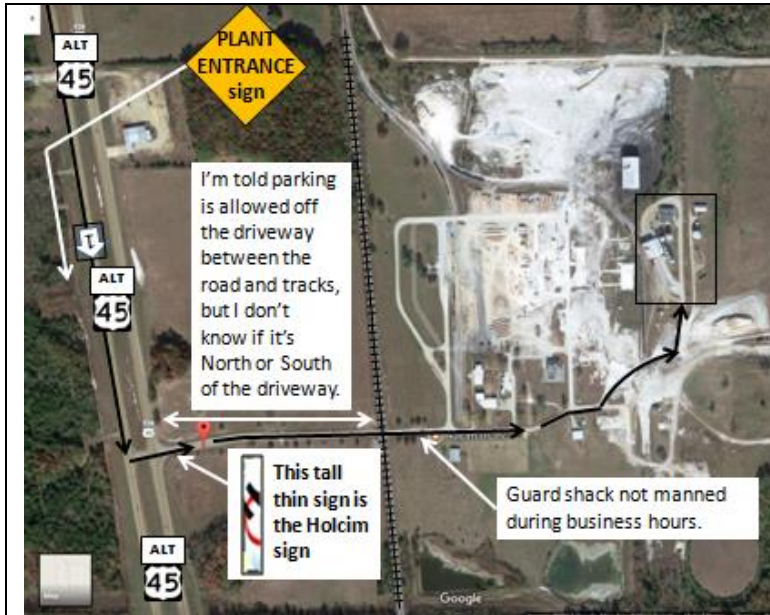


The above is a map of Tuscaloosa AL. There are three truck routes. The truck routes are at exits 73, 71, and 68. Exit 73 has 20 traffic lights. Exit 71 has 14 traffic lights. Exit 68 only has 2 traffic lights, so I suggestion using exit 68 it even though it has a toll that you need to pay cash for. On 12-15-17 tuscaloosabypass.com says \$9.00 both ways.



Once you get onto US-82 make sure you wait until you get to the Alt US-45 sign before taking the exit. Don't be tempted by other US-45 signs you will see before you get to your exit.

1. To get to the customer turn left on Alt US-45 and go ~9 miles
2. To get to the Loves turn right on Alt US-45 and go ~7 miles.
3. The customer is ~15 minutes from the loves.



This is the satellite image of the customer's facility. No scale, so if you come during business hours just pass by the empty guard shack and go straight to the unload area.

The white arrow with the number shows the location of the white arrow with the same number on the picture below.

The boxed area in this image indicates the area shown in the close up satellite image at the bottom of this page.



This image shows what you will see when you are close to the customers driveway.



This is a close up satellite image of the unloading area. The people in the office will tell you which way to go into the unloading facility. Once you are parked in the building they will sample you. You can normally stay in place while the lab tests the sample and they unload you.