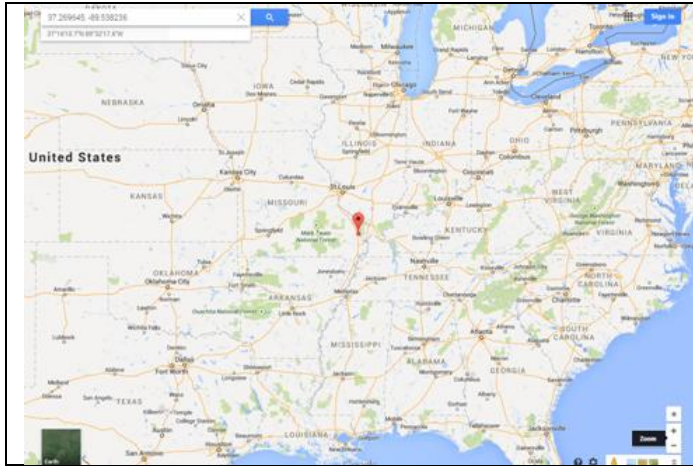


Buzzi Unichem USA

2524 S. Sprigg St.
Cape Girardeau, MO 63702
37.269645, -89.538236



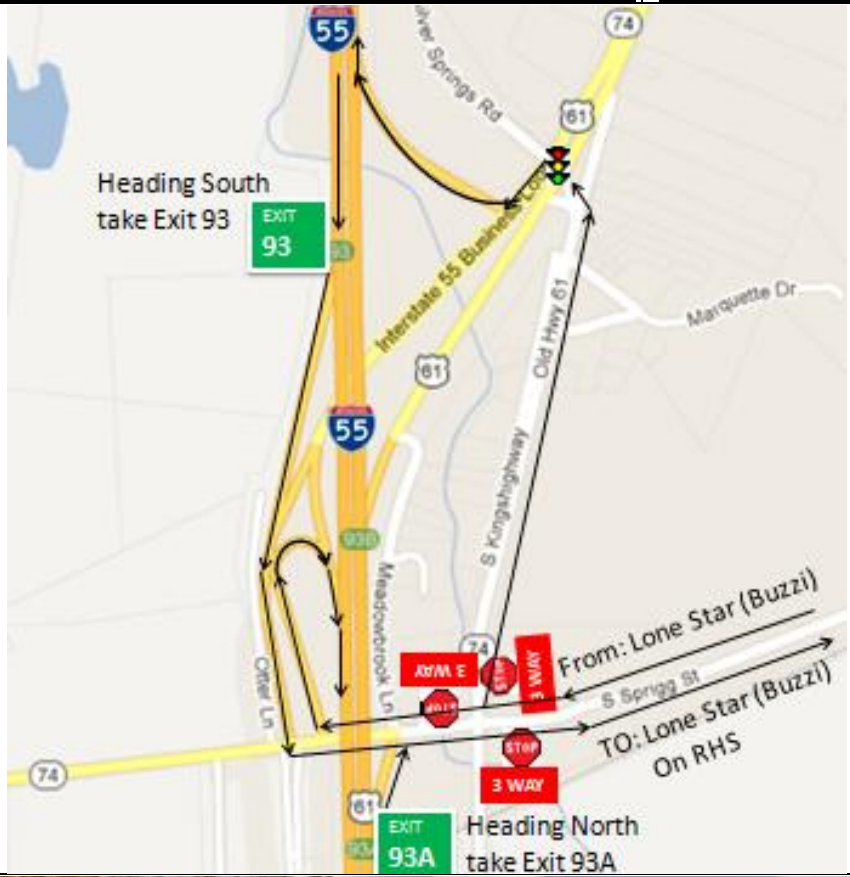
Giving directions into Buzzi at Cape Girardeau can be a little tricky. There are three different interstates nearby and sometimes they block parts of Sprigg St. This is an attempt to give you the information you need without overloading you.
From I-55 see the next page.
From I-24 or 57 turn the page.

From: Cape Girardeau MO I-95 North Exit **93A**

R		S. Spriggs St	Sign Says Buzzi Unicem
E	MO-74	1.7	RHS

From: Cape Girardeau MO I-95 South Exit **93**

L		S. Spriggs St	Sign Says Buzzi Unicem
E	MO-74	1.7	RHS



The easiest directions to show are from I-55. Just head East on S. Spriggs St, go 1.7 miles and it's on the Right Hand Side (RHS).

Getting back on I-55 is a little more complicated, it's much easier to show you on the map. The Map to the left should help.



When you get here just turn right into the facility

Buzzi Unichem USA

2524 S. Sprigg St.
Cape Girardeau, MO 63702
37.269645, -89.538236

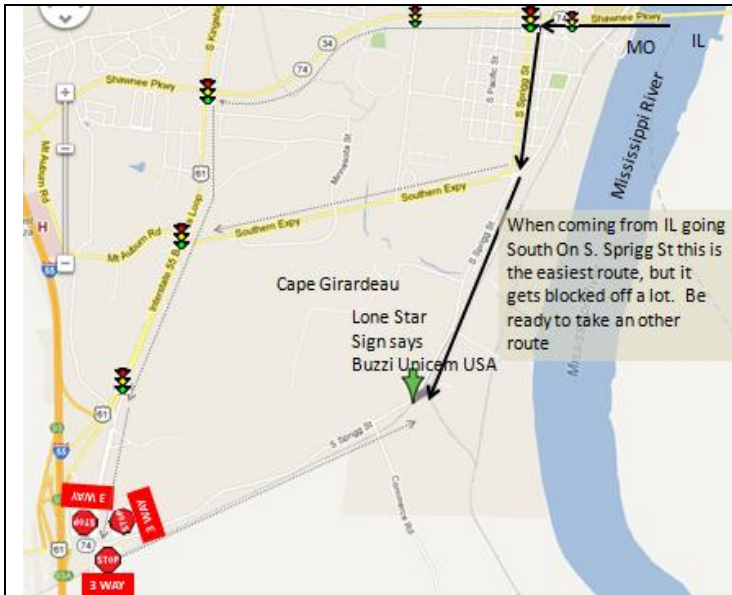


When coming from Illinois it is a little more complicated to explain. This page is to help you get to the Cape Girardeau Illinois, Missouri state line. The next page shows from the state line to Buzzi.

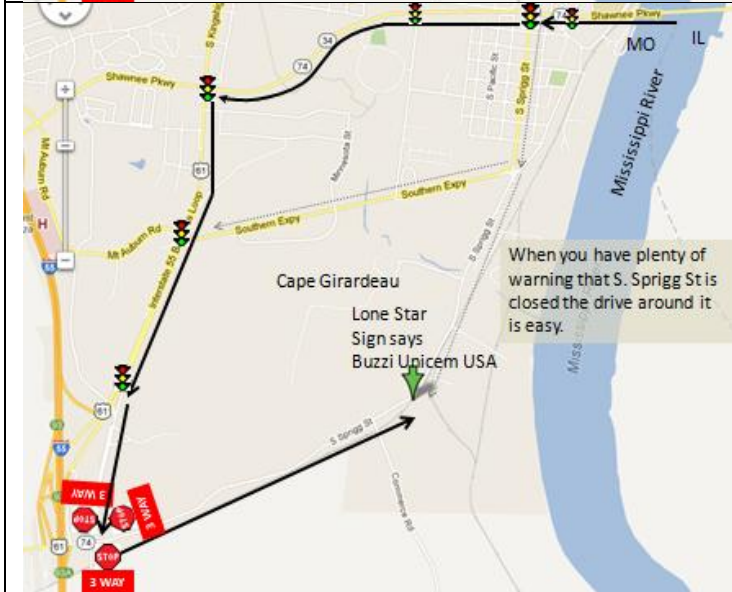
From: IL I-57 Exit 30			
			Anna IL
	W	IL-146	5.8 4 Way SS
L			Jonesboro IL
	W	IL-146	1.4 Traffic Circle
R		Traffic Circle	
	W	IL-146	0.2
R			
	W	IL-146	7.7 SS
L	S	IL-3	
	W	IL-146	11.7
R			MO State Line
	W	IL-146	3.7 Bridge

From: Vienna IL I-26 Exit 16			
			Anna IL
	W	IL-146	21.5 4 Way SS
L			Jonesboro IL
	W	IL-146	1.4 Traffic Circle
R		Traffic Circle	
	W	IL-146	0.2
R			
	W	IL-146	7.7 SS
L	S	IL-3	
	W	IL-146	11.7
R			MO State Line
	W	IL-146	3.7 Bridge

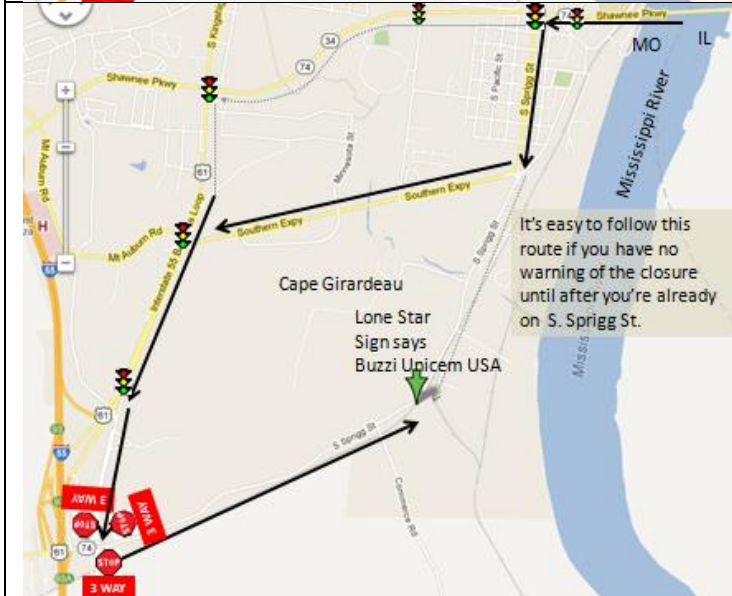
Once on the bridge crossing the state line from IL into MO



R			MO State Line	
	W	IL-146	3.7	Bridge
ST		Shawnee PKWY	Cape Girardeau MO	
	W	MO-74/MO-34	0.7	2nd LGT
L			Sign: Buzzi Unicem	
		S. Sprigg St	1.9	LHS



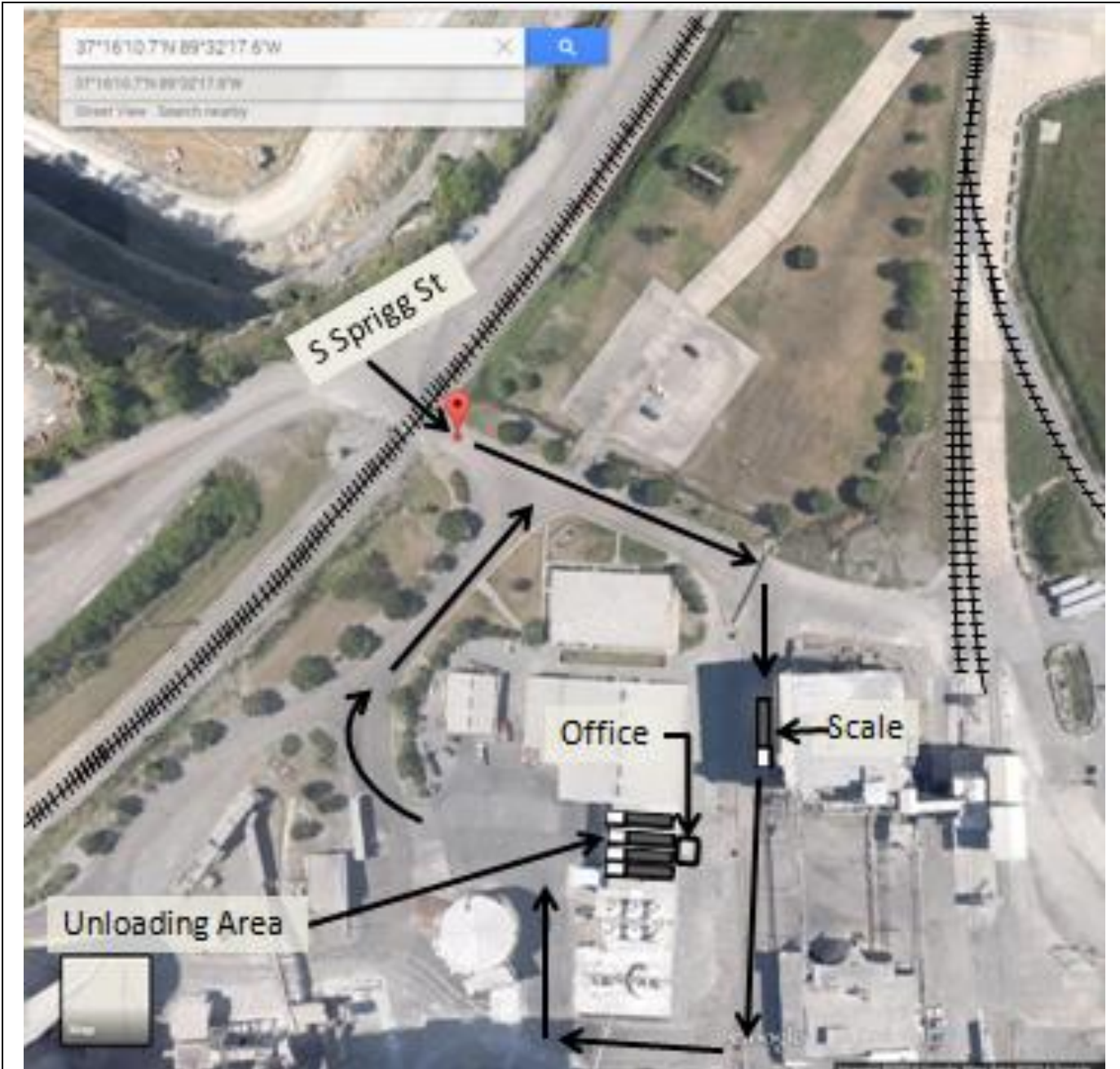
R			MO State Line	
	W	IL-146	3.7	Bridge
ST		Shawnee PKWY	Cape Girardeau MO	
	W	MO-74/MO-34	2.3	4th LGT
L		S. Kingshighway		
	S	I-55 Business Loop	1.5	2nd LGT
L		Kingshighway		
	W	MO-74	0.7	SS
L			Sign: Buzzi Unicem	
		S. Sprigg St	1.6	RHS



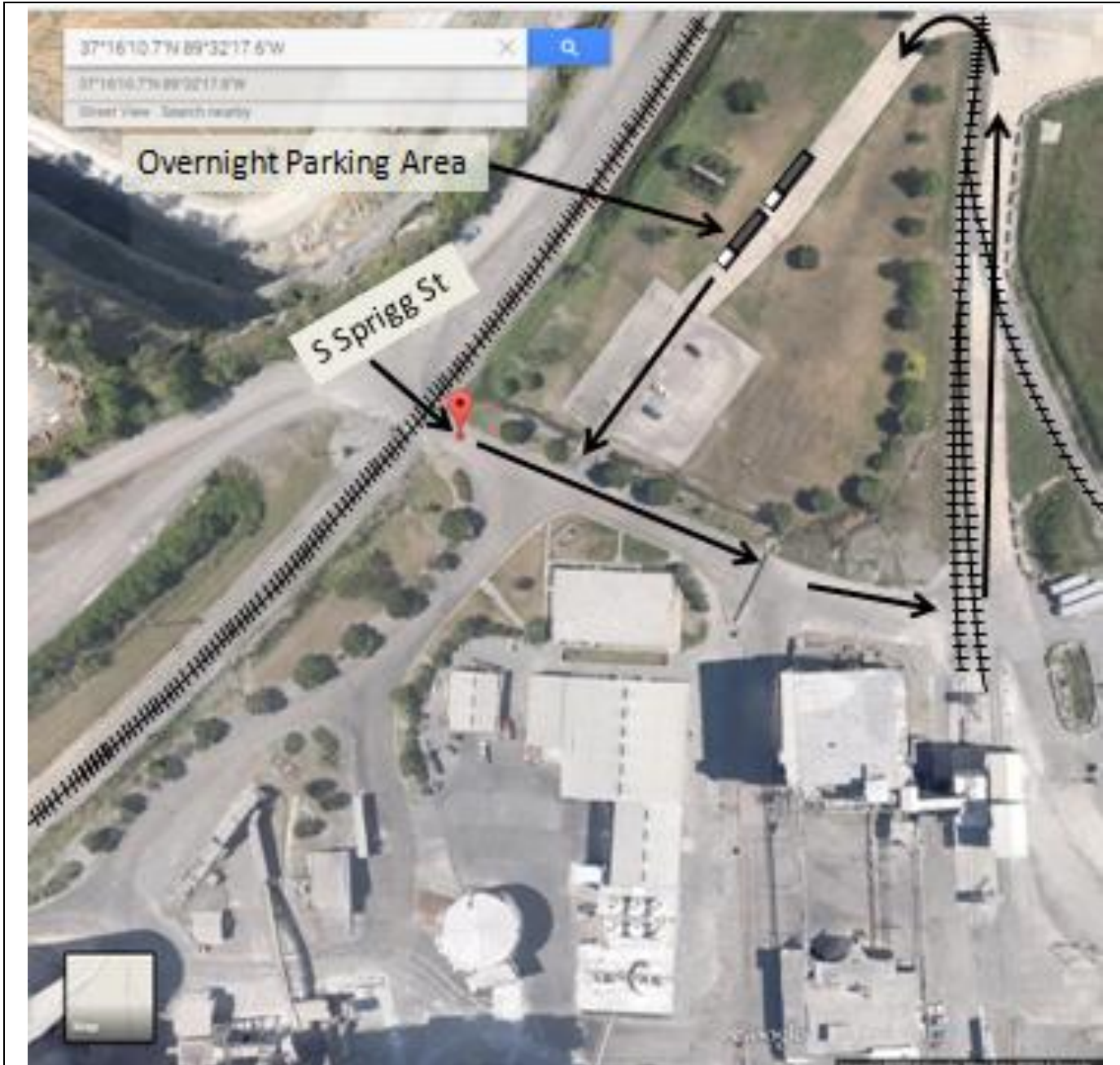
R			MO State Line	
	W	IL-146	3.7	Bridge
ST		Shawnee PKWY	Cape Girardeau MO	
	W	MO-74/MO-34	0.7	2th LGT
L		S. Sprigg St	0.7	RHS
R				
	W	Southern EXPY	1.5	1st LGT
L		S. Kingshighway		
	S	I-55 Business Loop	0.8	1st LGT
L		Kingshighway		
	W	MO-74	0.7	SS
L			Sign: Buzzi Unicem	
		S. Sprigg St	1.6	RHS

Buzzi Unichem USA

2524 S. Sprigg St.
Cape Girardeau, MO 63702
37.269645, -89.538236



When you get to Buzzi pull on the scale. Get two blank scale tickets from the mail box. Follow directions for printing heavy weight on each ticket. Go around to the unloading area and back into the slot you are told to. Wait until you are unloaded. Go back around to the scale and print your light weight on each scale ticket. Go back around to the loading area. Take 1 scale ticket and walk in unloading bay Go out the door on the back wall which leads to the office. Give them 1 scale ticket and complete the paperwork.



If coming in after hours you can spend the night in the Overnight Parking Area. When time to leave the parking area just drive thru the car parking lot. This is also where you will park when they get busy and all the unloading areas are full. If you run out of hours while unloading you can also park here to get your hours back.