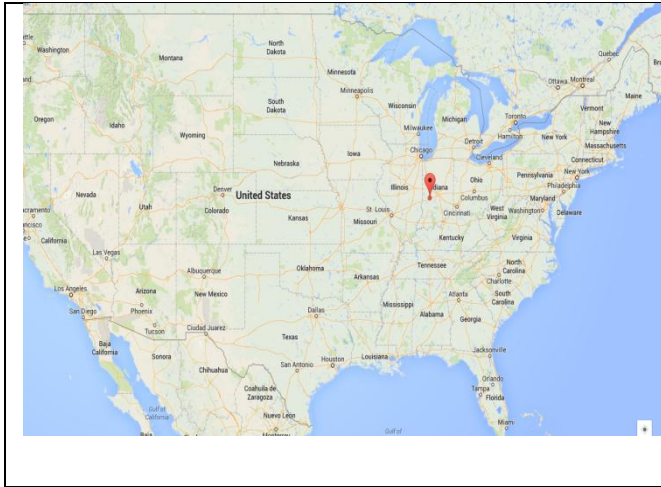
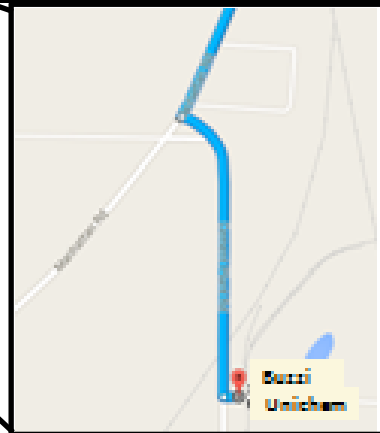


Buzzi Unichem

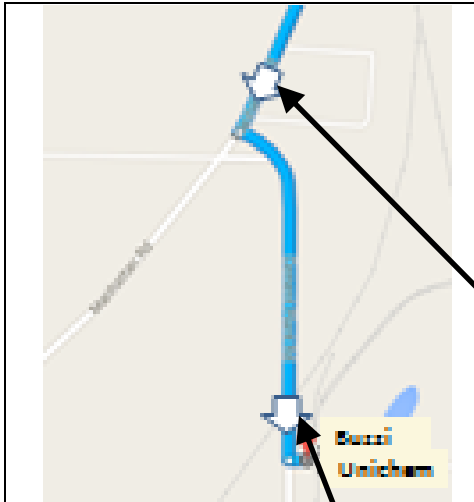
3301 South County Rd
Greencastle, IN 46135
39.612925, -86.878452



From: Cloverdale IN (I-70 West Exit 41)				
R			Greencastle IN	
	N	US-231	7.6	LGT
L				
		Veterans Memorial Hwy	1	T
L		150 W		Buzzi Sign LHS
		Jackson St	1	
L				SCALE LHS
		290 S	0.5	



This map is a blow up from marked section of map to the left.



The white arrows in the above map shows the position of the white arrows in the pictures on this page. The middle and bottom pictures shows your perspective as you come to the turn shown on the map. The picture on the top is a blowup of the signs you can't see in the middle picture.



You have arrived. Turn left to get on the scale.

Buzzi Unichem

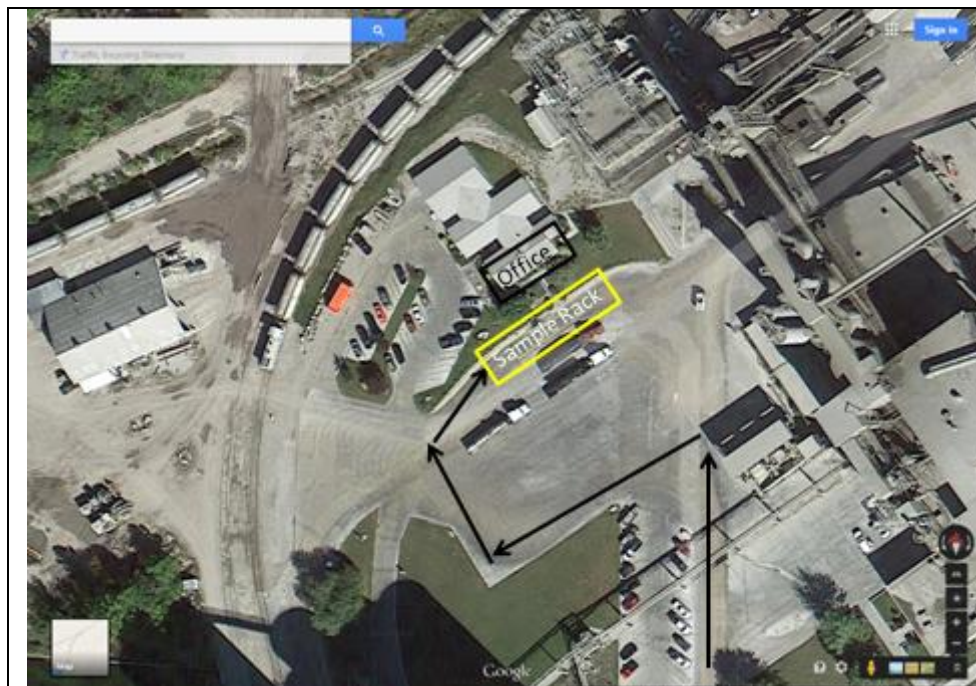
3301 South County Rd
Greencastle, IN 46135
39.612925, -86.878452



May 2015 New Information

The state now requires that we show up no earlier than 30 minutes prior to our appointment time and depart when finished.

1. Go to the **scale** and get a **laminated card** with a number printed on it. This card will be turned into the office with your paperwork.
2. Type the card number and # in the key pad. Wait for the green light, then go to the sample rack.



3. Once under the rack, take your laminated card and your paperwork into the office. They will give you some training and directions at that point.



One truck parks under the sample rack and one behind it. The rest of the trucks park out of the way.



Unloading area

Because the unloading area is hard to see in this picture I drew three trucks showing the three different bays position. The letters show each bay's designation. The down trucks also show orientation as two truck face the staging area and one faces away. These are all drive through bays.

When driving around the building it can be a little tight.

After getting unloaded go back to the scale. Face away from the facility and type in the scale number and # again. Wait for 2 scale tickets to be printed before returning to the office to finish the paperwork.