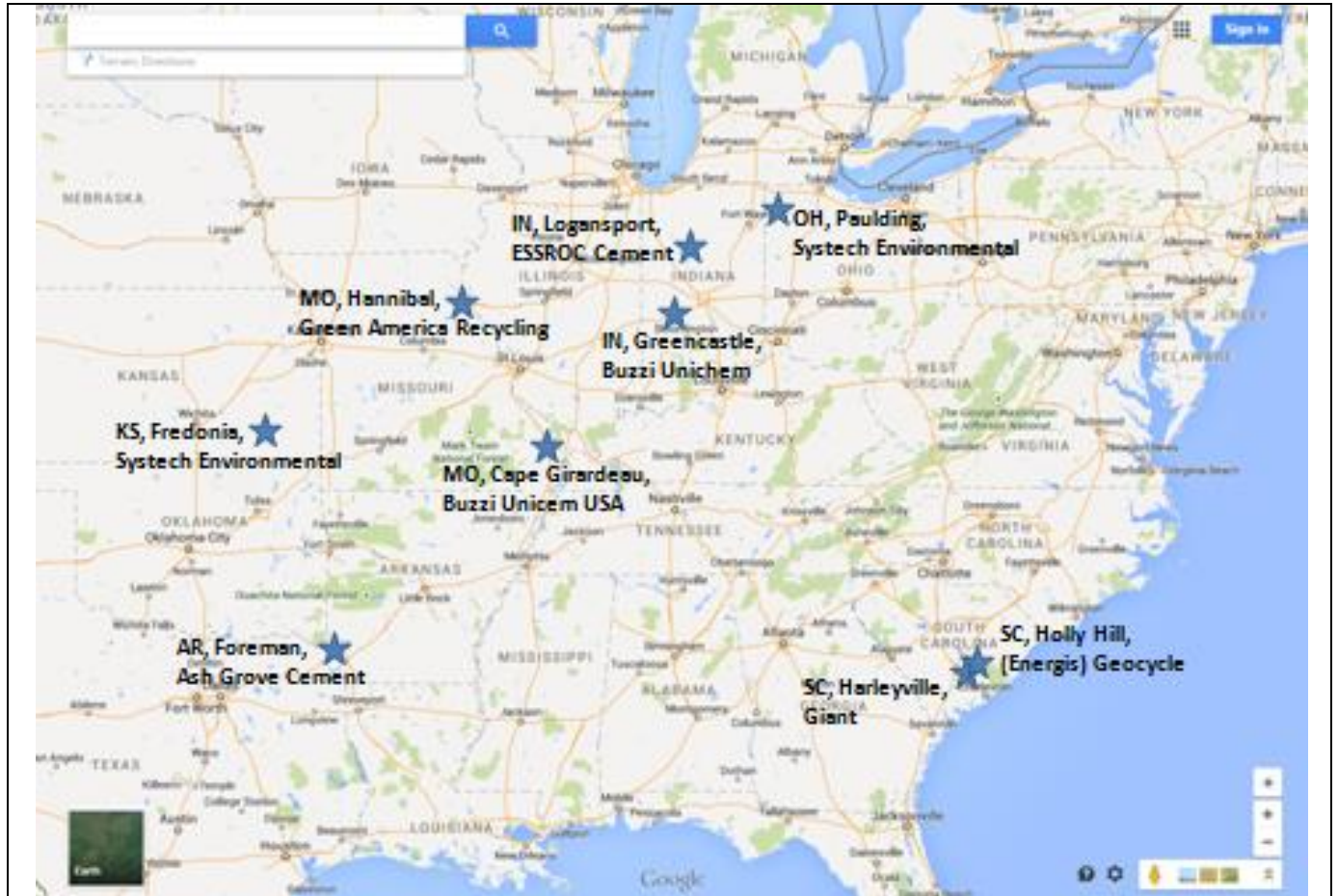


## Cement Plants Familiarization



Our Roberoller has been described as the bread and butter of our business. The facilities in this section have agreed to unload with the Roberoller turning. You may need to turn off the system for sampling, or connect it to external hydraulic lines but the people running the facility will walk you through the procedures for that facility. All of us tanker drivers deliver to these facilities.

Disclaimer ..... 3

SC, Holly Hill, (Energis) Geocycle..... 4

SC, Harleyville, Giant ..... 8

IN, Greencastle, Buzzi Unichem ..... 12

MO, Cape Girardeau, Buzzi Unicem USA ... 16

OH, Paulding, Systech Environmental ..... 22

IN, Logansport, ESSROC Cement..... 26

AR, Foreman, Ash Grove Cement ..... 30

KS, Fredonia, Systech Environmental ..... 32

MO, Hannibal, Green America Recycling.... 38

## Truck Directions Disclaimer and Information

This information is given with the understanding that:

1. The truck driver is able to decide whether or not to use these directions based on his or her (the phrase "or her" is understood for the rest of this document) own experience and understanding of the situation
2. The truck driver has experience and can use a map, GPS, or any other form of navigation and doesn't rely solely on these directions to prevent him from getting lost
3. The directions given are not considered current. Bridge weights may change, new "No Truck" signs may go up, or any number of things may change and the driver is responsible for adapting to out of date information. In addition facilities constantly change names so you need to adjust
4. The driver is responsible for adapting to inaccurate information. I am making the directions as accurate as possible, but making directions is not my primary job. Driver, you must be flexible enough to make any adjustments
5. Dispatch will not force the use of these directions. The directions given are to provide guidance and information for planning the trip they are not intended to be used as a directional requirement
6. Any toll information provided should be considered:
  - a. as a guide only and not the actual toll you will need to pay
  - b. out of date
  - c. incomplete and more toll booths may be encountered (Example would be listing the toll for the New Jersey Turn Pike, but not listing the toll for the Delaware Memorial Bridge at the end of the Turn Pike)
7. These directions are not necessarily the best directions. There may be better ways to get to the customer and the driver has a responsibility to use his discretion for all routing

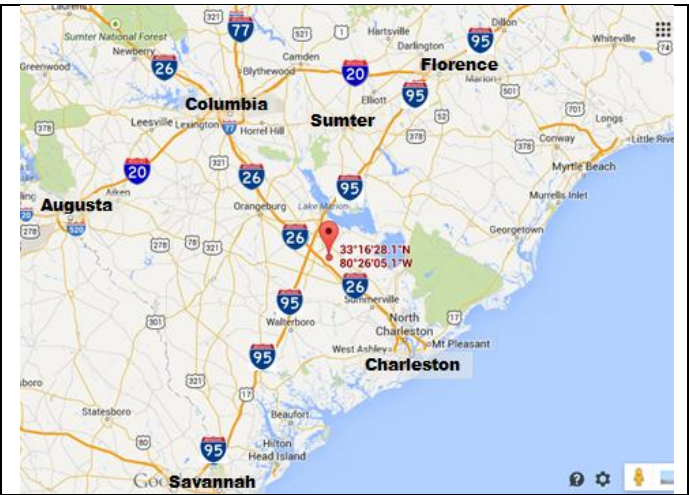
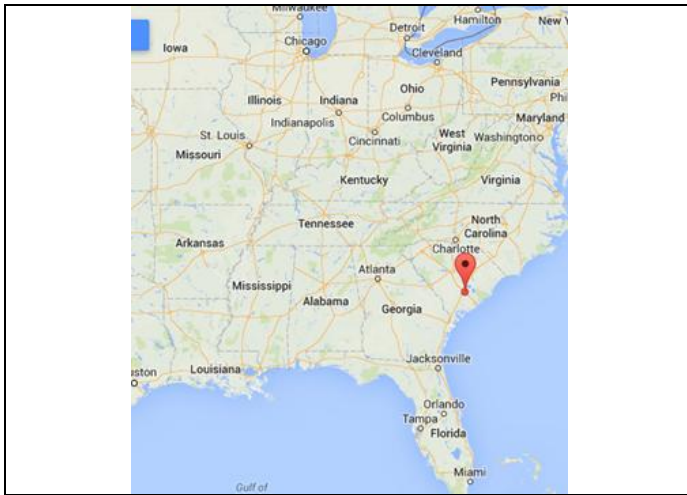
In short, these are the best directions I can provide and I hope they are helpful in planning your trip. As a driver, you are responsible for your load. This information is not intended to bind you in any way, shape, or form. **It is expected that you will not follow the directions exactly, but use your experience and knowledge to safely and efficiently complete your run.** Have a safe trip and I hope this information is helpful

Robert Shifflett

Sumter Transport Truck Driver

# (Energis) Geocycle

2175 Gardner Blvd  
 Holly Hill, SC 29059  
 33.274486, -80.434753



From: SC I-26 East Exit 177

L			
N	SC-453	3.1	RHS

The white arrow in the map to the left shows the position of the white arrow in the picture below it.



You will see the Holcim symbol and that is your entrance.





From: SC I-95 South Exit 93				
L	S	US-15	3.2	LGT
	SL	E	US-176	4.6
R	E	US-176 TRUCK	2.2	SS
	R	S	SC-453	2.5

No trucks through the town of Holly Hill. Take the US-176 TRUCK bypass. As shown on the map, there is a Ford dealer on the left and a Boyd's furniture store on the right. The next road on the right isn't marked well but it's the US-176 TRUCK route that you need to take.

The above map has white arrows that correlate with the arrows in the pictures below. The numbers represent the picture number that contains that corresponding arrow.



After passing Ford dealer turn into US 176 TRUCK



You will see the Holcim symbol and that is your entrance.



# (Energis) Geocycle

2175 Gardner Blvd  
Holly Hill, SC 29059  
33.274486, -80.434753



1. To enter the facility you cross an active rail road track so be careful and go straight to the guard shack.
2. After the guard grants access go to the scale.
3.
  - a. If you have a CB call the guard and tell them you're from STC, scaling in, and your truck number.
  - b. If you don't have a CB the guard will come out of the shack and wave you forward.



1. After scaling pick up your scale ticket at the Guard Shack.
2. Drive to the entrance gate and park.



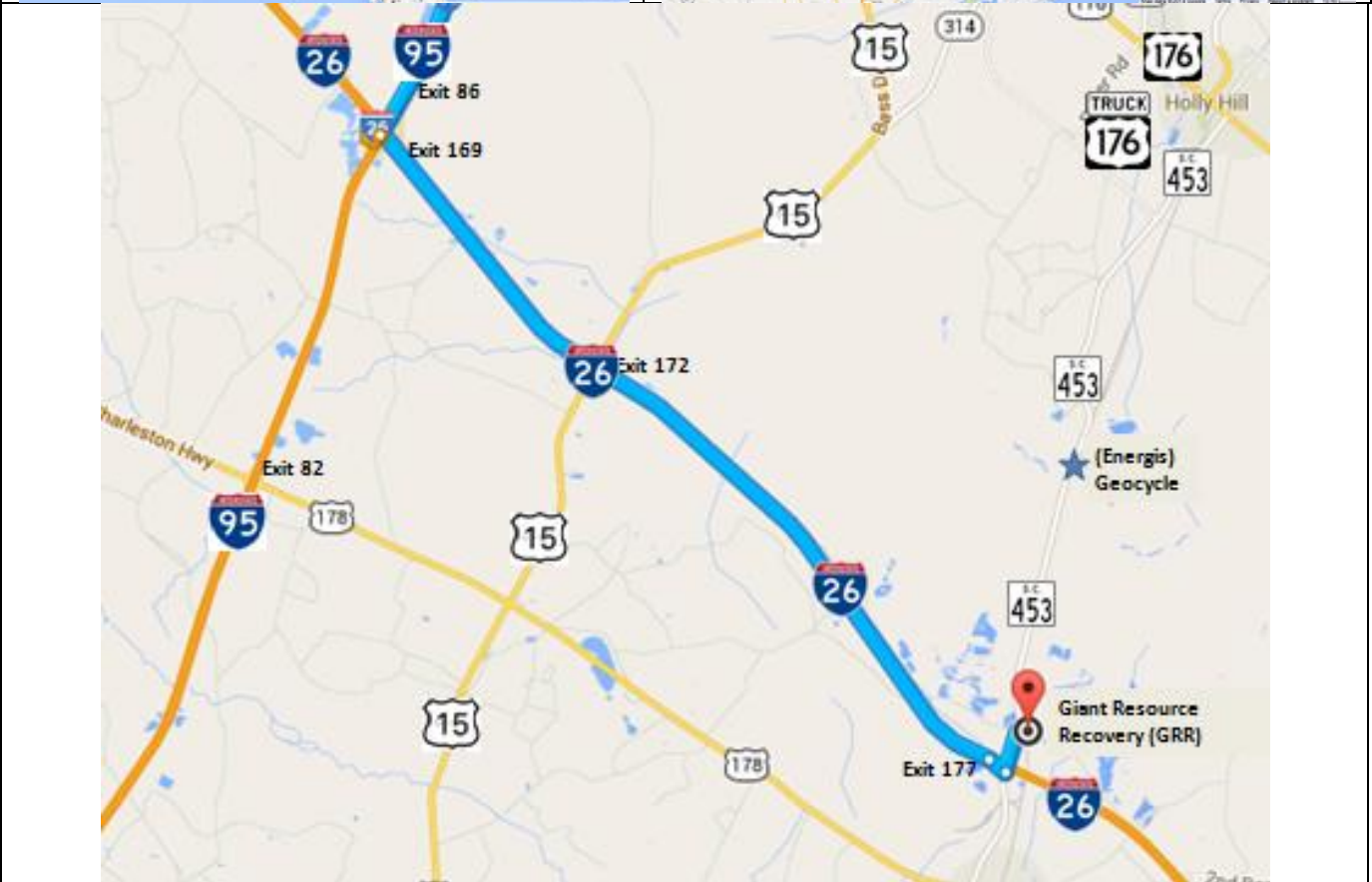
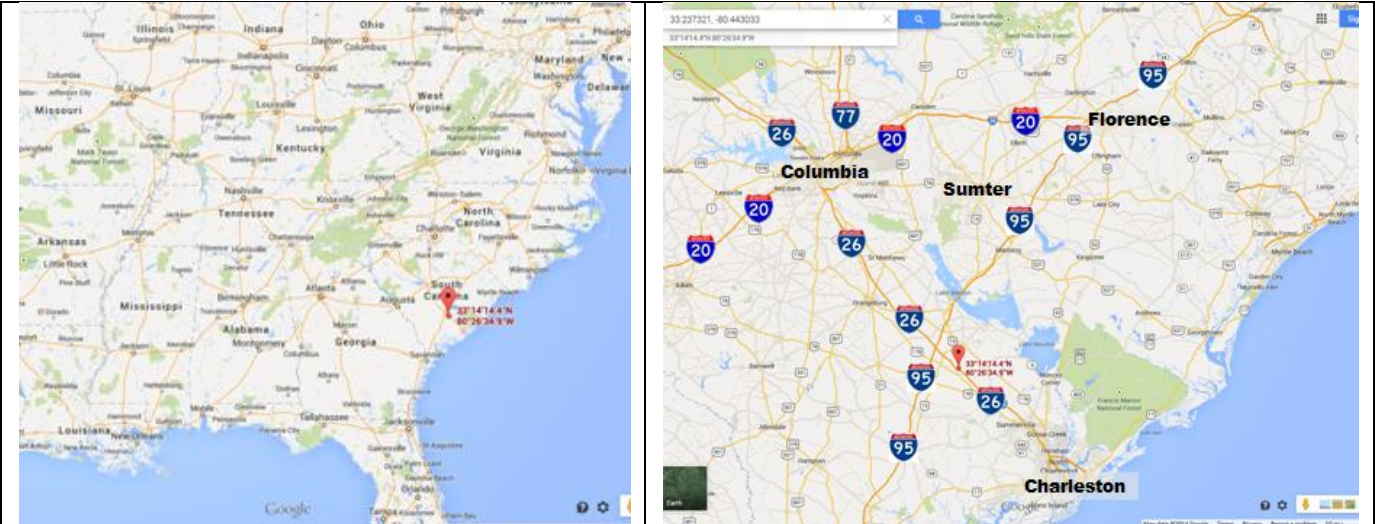
1. Go into the office and give them your paperwork.
2. They will give you instructions from there.



1. When entering the first gate you will be directed where to park or drop your trailer. After dropping your trailer go out the exit gate back around the guard shack and back to the Entrance gate.
2. When they are done unloading reconnect and go to the scale again.
3. After scaling take the scale ticket to the office.

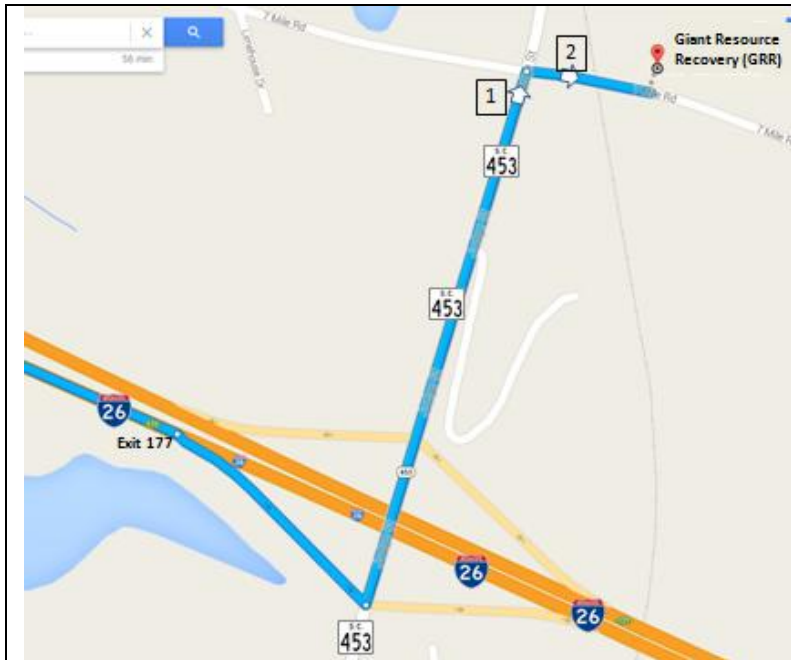
# Giant

SC Hwy 453 N @ I-26  
Harleyville, SC 29448  
33.237321, -80.443033



I've added this map to show the location of Giant in relationship to I-95, the town of Holly Hill, and Geocycle.

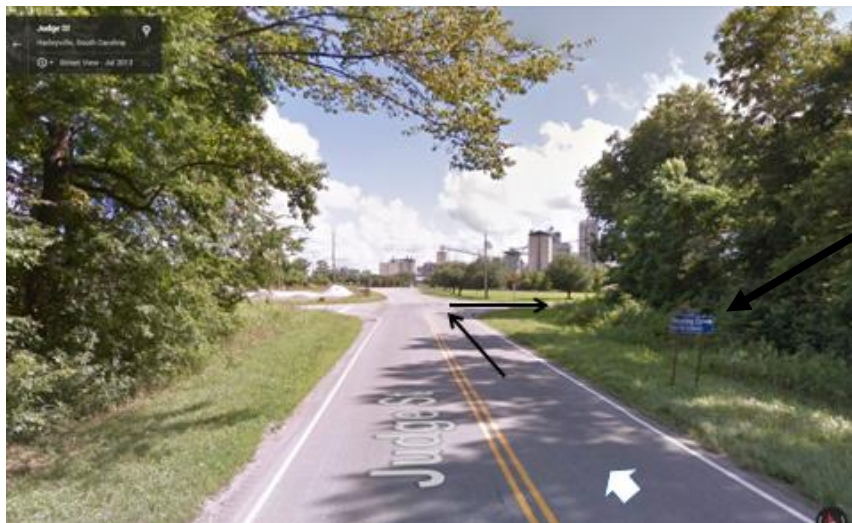




From: SC I-26 East Exit 177			
L		See the plant	
	N	SC-453	0.4
R		Cross RR see Scale	
		Unmarked Road	<0.1

The map to the left has white arrows that correlate with the arrows in the pictures below. The numbers represent the picture number that contains that corresponding arrow.

Picture 1



Above picture represents the sign that you can't read in the picture to the left



After crossing the tracks go straight to the scale, not the guard shack.

# Giant

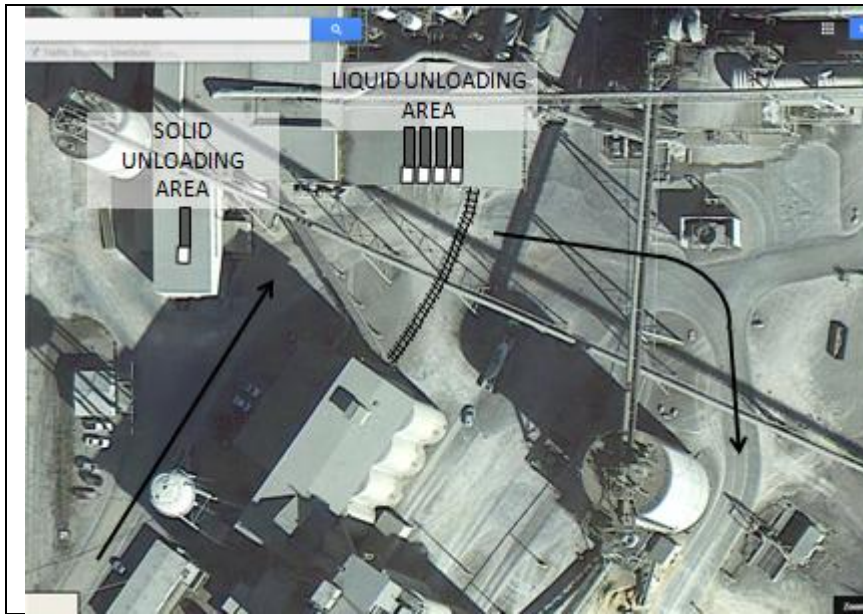
SC Hwy 453 N @ I-26  
Harleyville, SC 29448  
33.237321, -80.443033



1. If you show up to early you will need to park outside the fence beside the scale
2. After scaling park next to the office and turn in your paperwork. If you have a sample you may be told to take it to the lab.
3. After the office is done with collecting your paperwork you will be told to go to the parking area and wait or go on back to the unloading area. (My first time there they had me park until someone could come and show me the way back.)



This shows the way back to the unloading area.



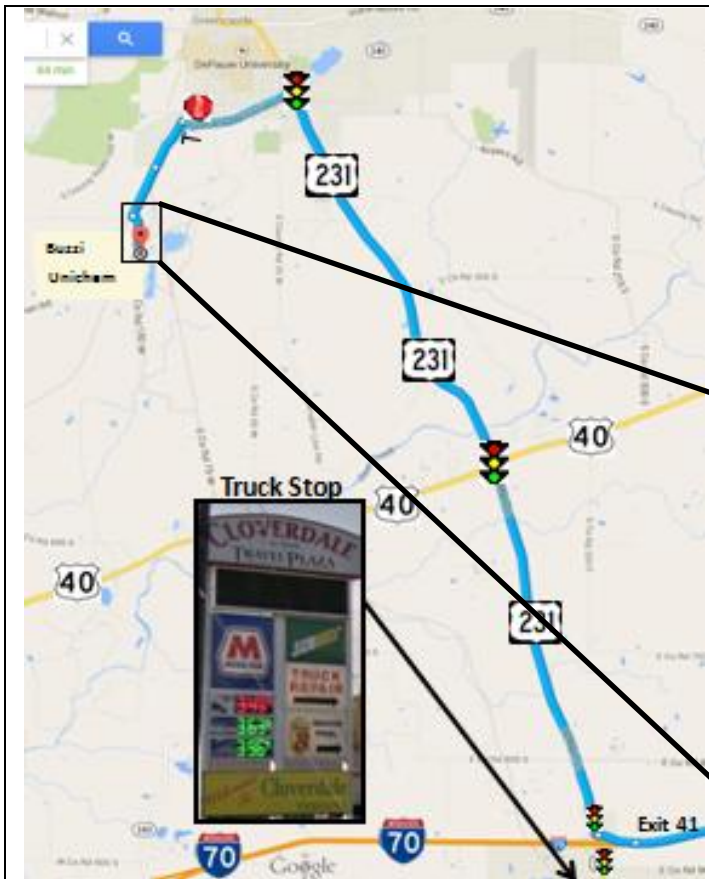
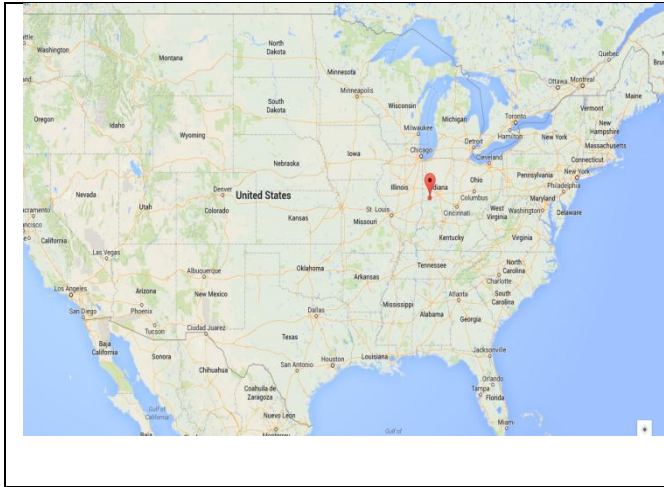
When you get to the unloading area you will normally find someone in the liquid unloading area to tell you where to park. All unloading is done undercover so I drew several trucks on the roof of the building to represent where you will be unloaded. Backing in can be a pain as the ground is uneven and you might need to cross the tracks to get the proper angle to get backed in. Insure to watch the front of your truck as there are lots of obstacles. If you are unloading solids they will sample you outside before backing you in.



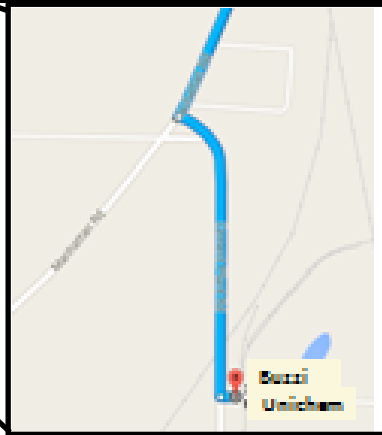
After getting unloaded go out by the guard shack and U-turn back onto the scale. After scaling the second time go back to the office to finish the paperwork.

After you're done at the office go back out past the guard shack to leave.

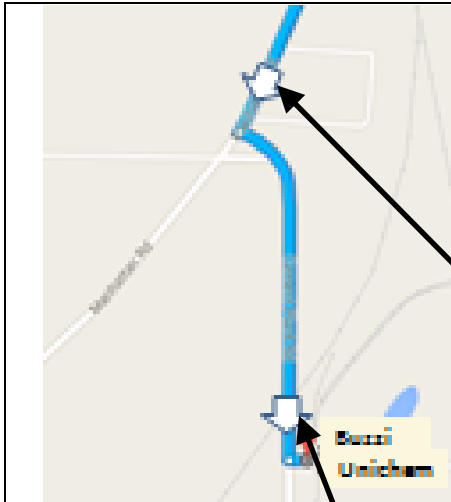
**Buzzi Unichem**  
 3301 South County Rd  
 Greencastle, IN 46135  
 39.612925, -86.878452



From: Cloverdale IN (I-70 West Exit 41)			
R		Greencastle IN	
	N	US-231	7.6   LGT
L			
		Veterans Memorial Hwy	1   T
L		150 W	Buzzi Sign LHS
		Jackson St	1
L		SCALE LHS	
		290 S	0.5



This map is a blow up from marked section of map to the left.



The white arrows in the above map shows the position of the white arrows in the pictures on this page. The middle and bottom pictures shows your perspective as you come to the turn shown on the map. The picture on the top is a blowup of the signs you can't see in the middle picture.



You have arrived. Turn left to get on the scale.

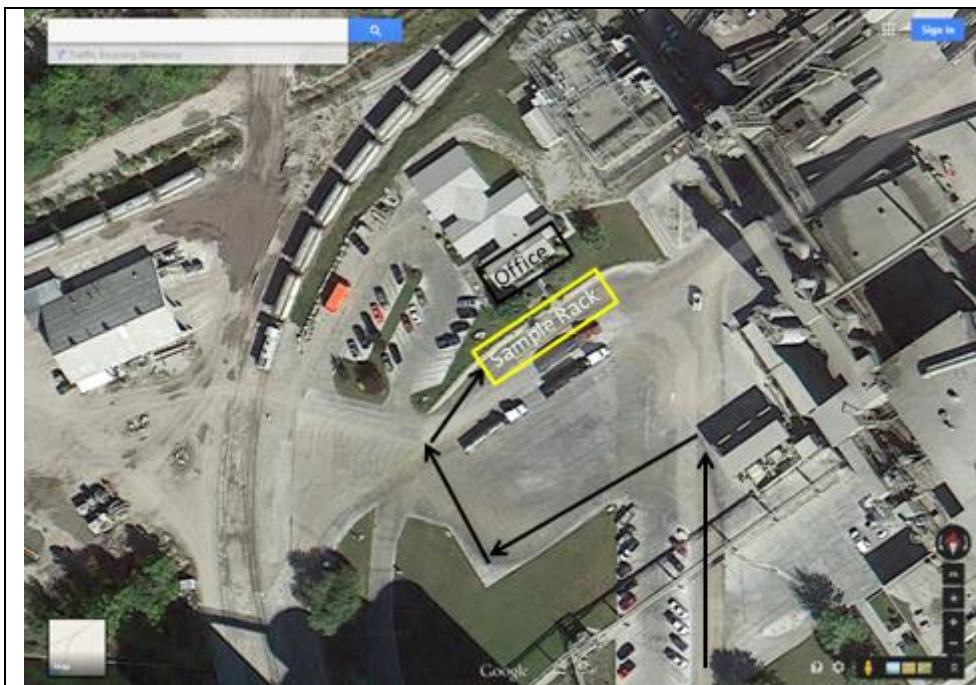
# Buzzi Unichem

3301 South County Rd  
Greencastle, IN 46135  
39.612925, -86.878452



Go to the **scale** and get a **laminated card** with a number printed on it. This card will be turned into the office with your paperwork.

1. During Buzzi business hours type the card number and # in the key pad. Wait for the green light, then go to the sample rack.
2. ~~Not during Buzzi business hours (the night before).~~
  - a. Before midnight just take the card with you to the parking area. You will scale in after you are sampled.
  - b. After midnight type in the card number and #. Wait for the green light, then go to the truck parking area.



~~During Buzzi business hours~~ and once under the rack, take your laminated card and your paperwork into the office. They will give you some training and directions at that point.

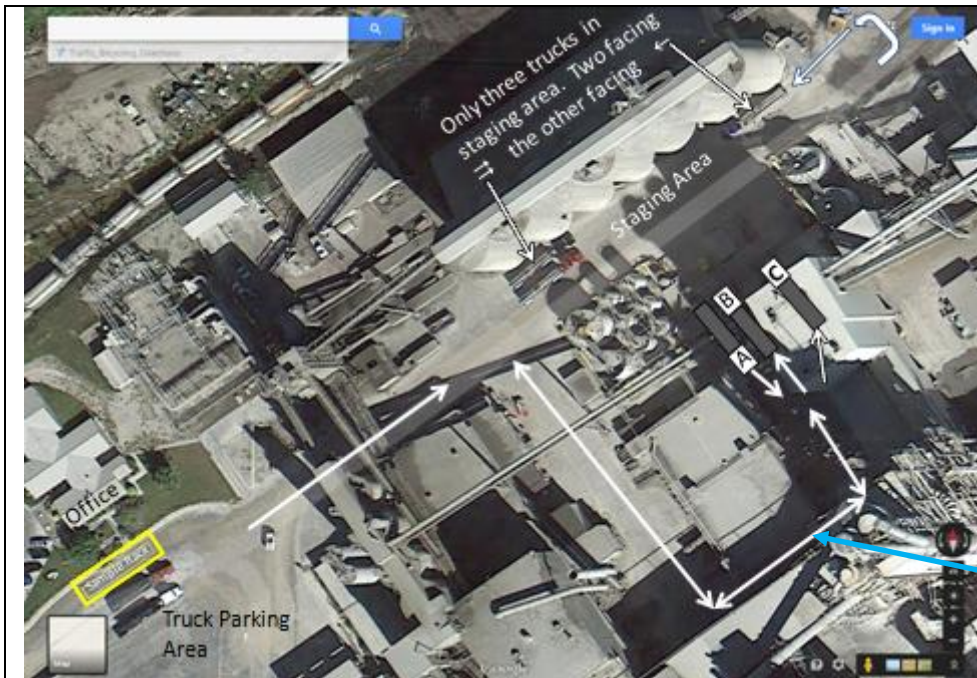
### May 2015 New Information

The state now requires that we show up no earlier than 30 minutes prior to our appointment time and depart when finished.



**Parking the night before**  
 One truck parks under the sample rack and one behind it. The rest of the trucks park out of the way. They open at 6:00 AM eastern. Nobody wakes you up.

In this picture I drew 6 trucks with numbers on them to show normal overnight parking positions and order under the sample rack. Be flexible when it's not normal. If you didn't scale the night before, do it after being sampled.



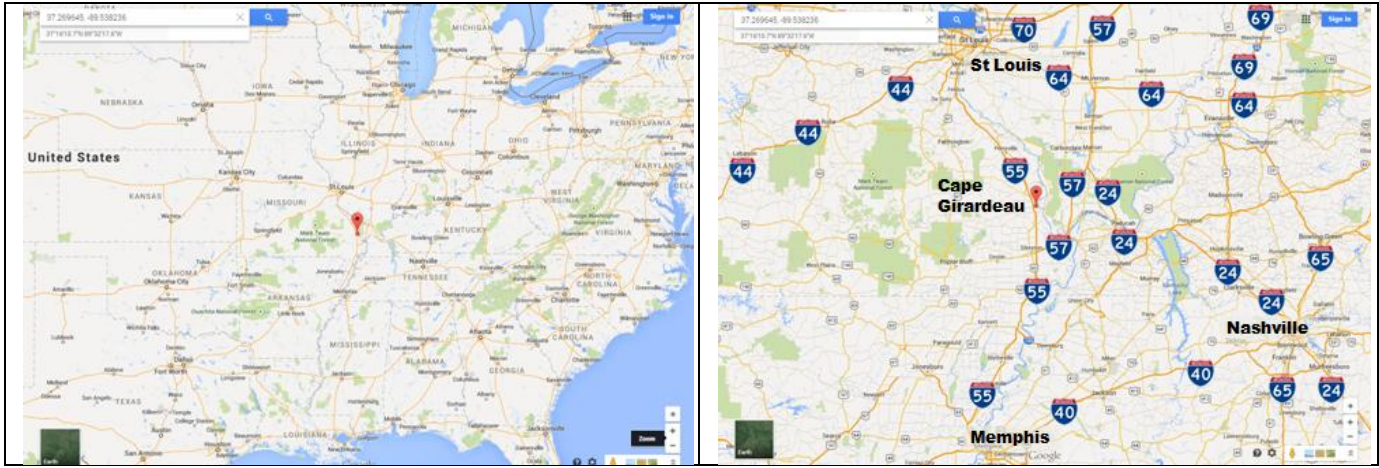
**Unloading area**  
 Because the unloading area is hard to see in this picture I drew three trucks showing the three different bays position. The letters show each bay's designation. The down trucks also show orientation as two truck face the staging area and one faces away. These are all drive through bays.

When driving around the building it can be a little tight.

After getting unloaded go back to the scale. Face away from the facility and type in the scale number and # again. Wait for 2 scale tickets to be printed before returning to the office to finish the paperwork.

# Buzzi Unichem USA

2524 S. Sprigg St.  
Cape Girardeau, MO 63702  
37.269645, -89.538236



Giving directions into Buzzi at Cape Girardeau can be a little tricky. There are three different interstates nearby and sometimes they block parts of Sprigg St. This is an attempt to give you the information you need without overloading you.

From I-55 see the next page.

From I-24 or 57 turn the page.

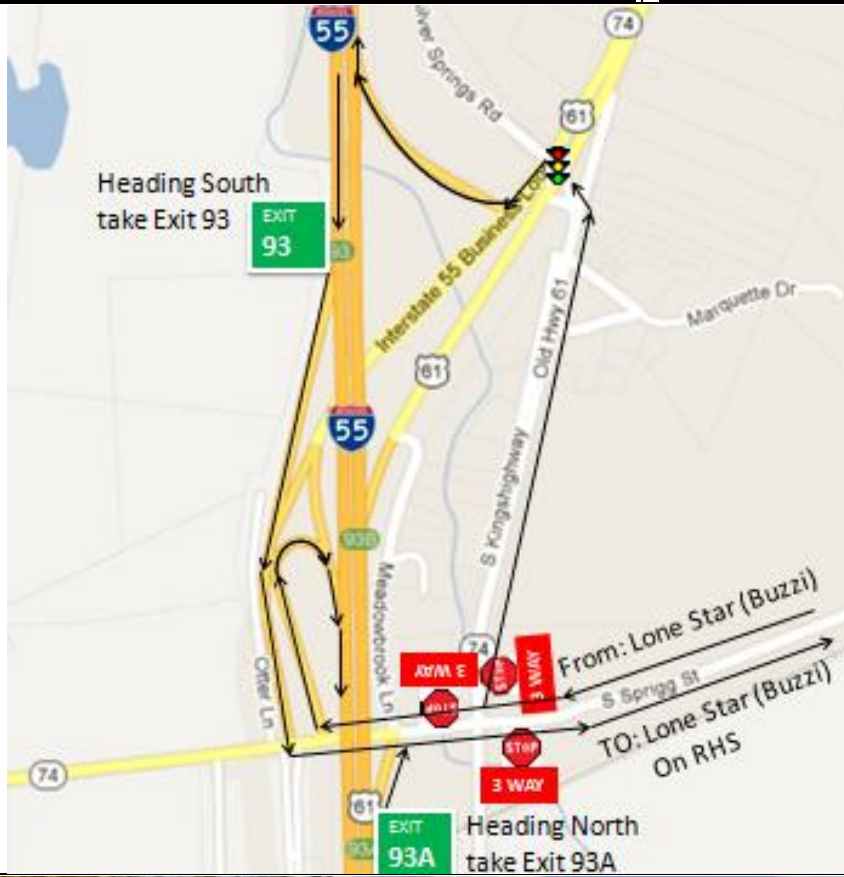


From: Cape Girardeau MO I-95 North Exit **93A**

R		S. Spriggs St	Sign Says Buzzi Unicem
E	MO-74	1.7	RHS

From: Cape Girardeau MO I-95 South Exit **93**

L		S. Spriggs St	Sign Says Buzzi Unicem
E	MO-74	1.7	RHS



The easiest directions to show are from I-55. Just head East on S. Spriggs St, go 1.7 miles and it's on the Right Hand Side (RHS).

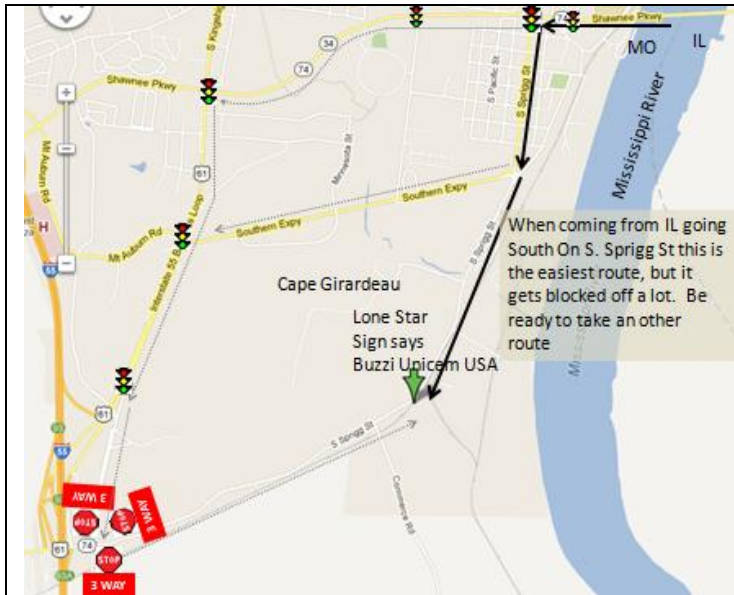
Getting back on I-55 is a little more complicated, it's much easier to show you on the map. The Map to the left should help.



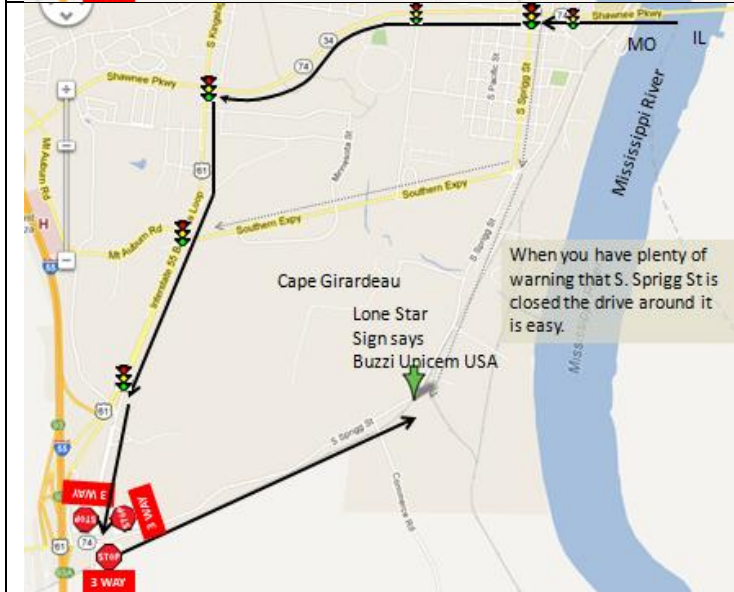
When you get here just turn right into the facility



Once on the bridge crossing the state line from IL into MO



R			MO State Line	
	W	IL-146	3.7	Bridge
ST		Shawnee PKWY	Cape Girardeau MO	
	W	MO-74/MO-34	0.7	2nd LGT
L			Sign: Buzzi Unicem	
		S. Sprigg St	1.9	LHS



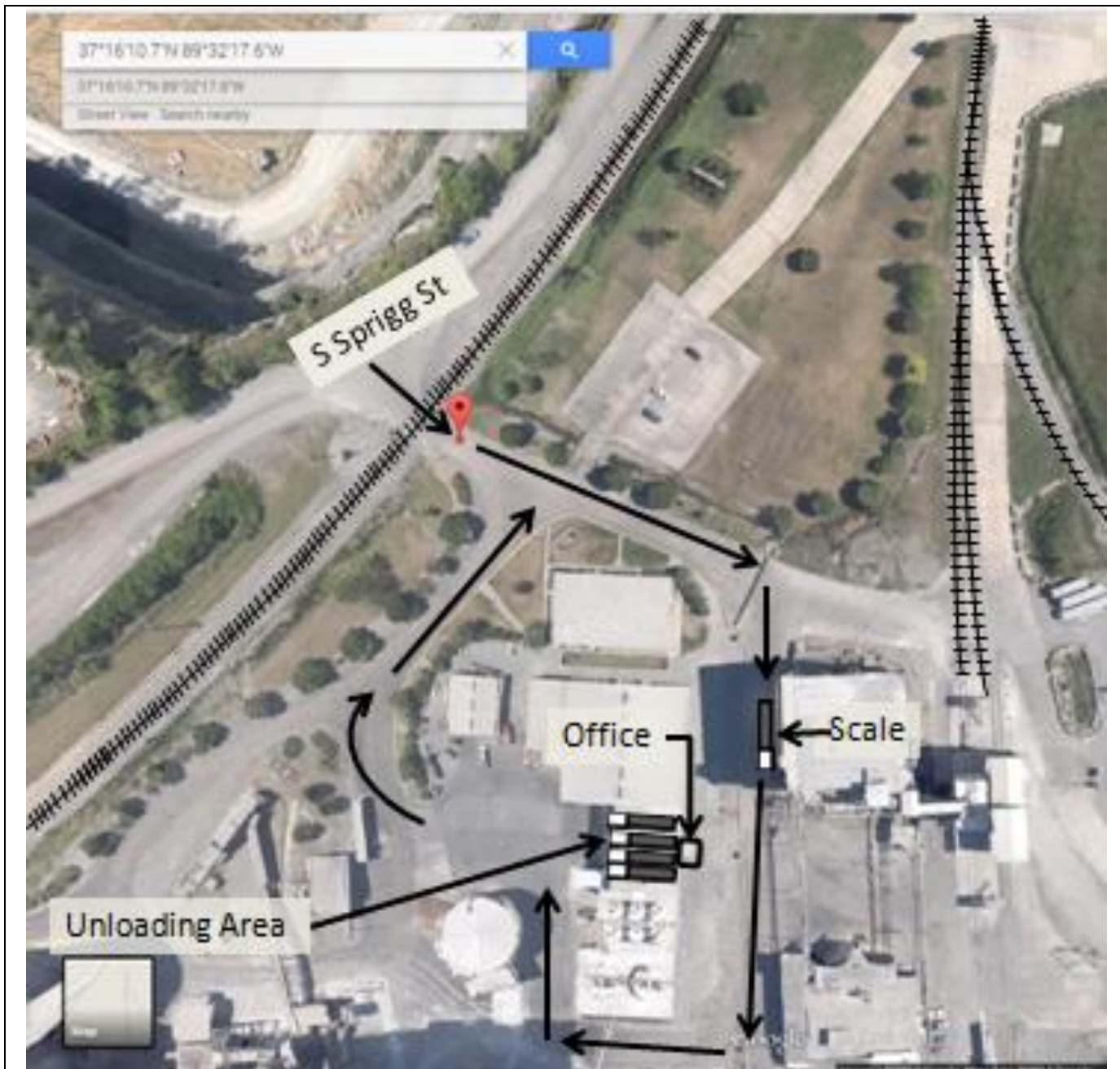
R			MO State Line	
	W	IL-146	3.7	Bridge
ST		Shawnee PKWY	Cape Girardeau MO	
	W	MO-74/MO-34	2.3	4th LGT
L		S. Kingshighway		
	S	I-55 Business Loop	1.5	2nd LGT
L		Kingshighway		
	W	MO-74	0.7	SS
L			Sign: Buzzi Unicem	
		S. Sprigg St	1.6	RHS



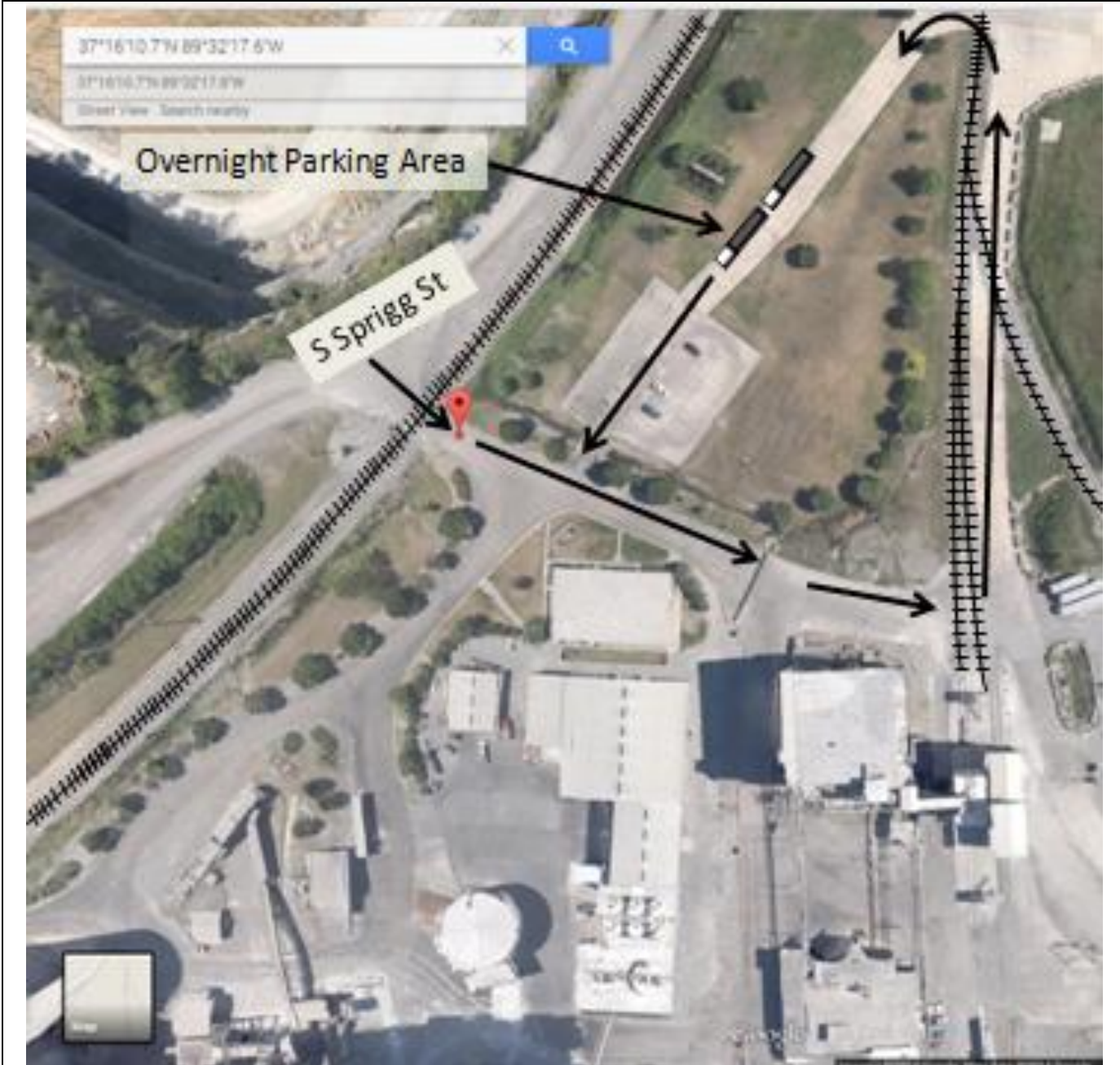
R			MO State Line	
	W	IL-146	3.7	Bridge
ST		Shawnee PKWY	Cape Girardeau MO	
	W	MO-74/MO-34	0.7	2th LGT
L		S. Sprigg St	0.7	RHS
R				
	W	Southern EXPY	1.5	1st LGT
L		S. Kingshighway		
	S	I-55 Business Loop	0.8	1st LGT
L		Kingshighway		
	W	MO-74	0.7	SS
L			Sign: Buzzi Unicem	
		S. Sprigg St	1.6	RHS

# Buzzi Unichem USA

2524 S. Sprigg St.  
Cape Girardeau, MO 63702  
37.269645, -89.538236



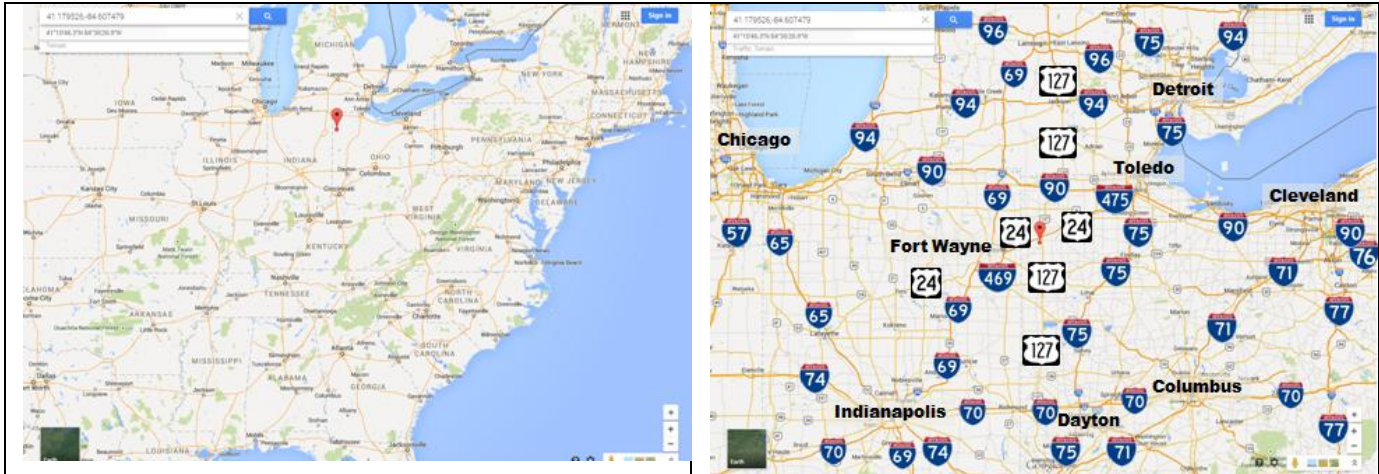
When you get to Buzzi pull on the scale. Get two blank scale tickets from the mail box. Follow directions for printing heavy weight on each ticket. Go around to the unloading area and back into the slot you are told to. Wait until you are unloaded. Go back around to the scale and print your light weight on each scale ticket. Go back around to the loading area. Take 1 scale ticket and walk in unloading bay Go out the door on the back wall which leads to the office. Give them 1 scale ticket and complete the paperwork.



If coming in after hours you can spend the night in the Overnight Parking Area. When time to leave the parking area just drive thru the car parking lot. This is also where you will park when they get busy and all the unloading areas are full. If you run out of hours while unloading you can also park here to get your hours back.

# Systech Environmental Corp

1139 Rt. 176  
Paulding, OH 45879  
41.179526,-84.607479



This facility is between Toledo OH and Fort Wayne IN. It is just south of Exit 13 on US-24 in Ohio. I haven't found a map that shows Exit 13 on US-24 so I'm providing a picture to show you what you will see when you get there.



From: Toledo, OH I-475 Exit 4 B				
	W	US-24	55.2	X 13
L			LAFARGE	
	S	US-127	2.7	Sign
R			Gate 4	
	W	Rd-176	1.3	RHS

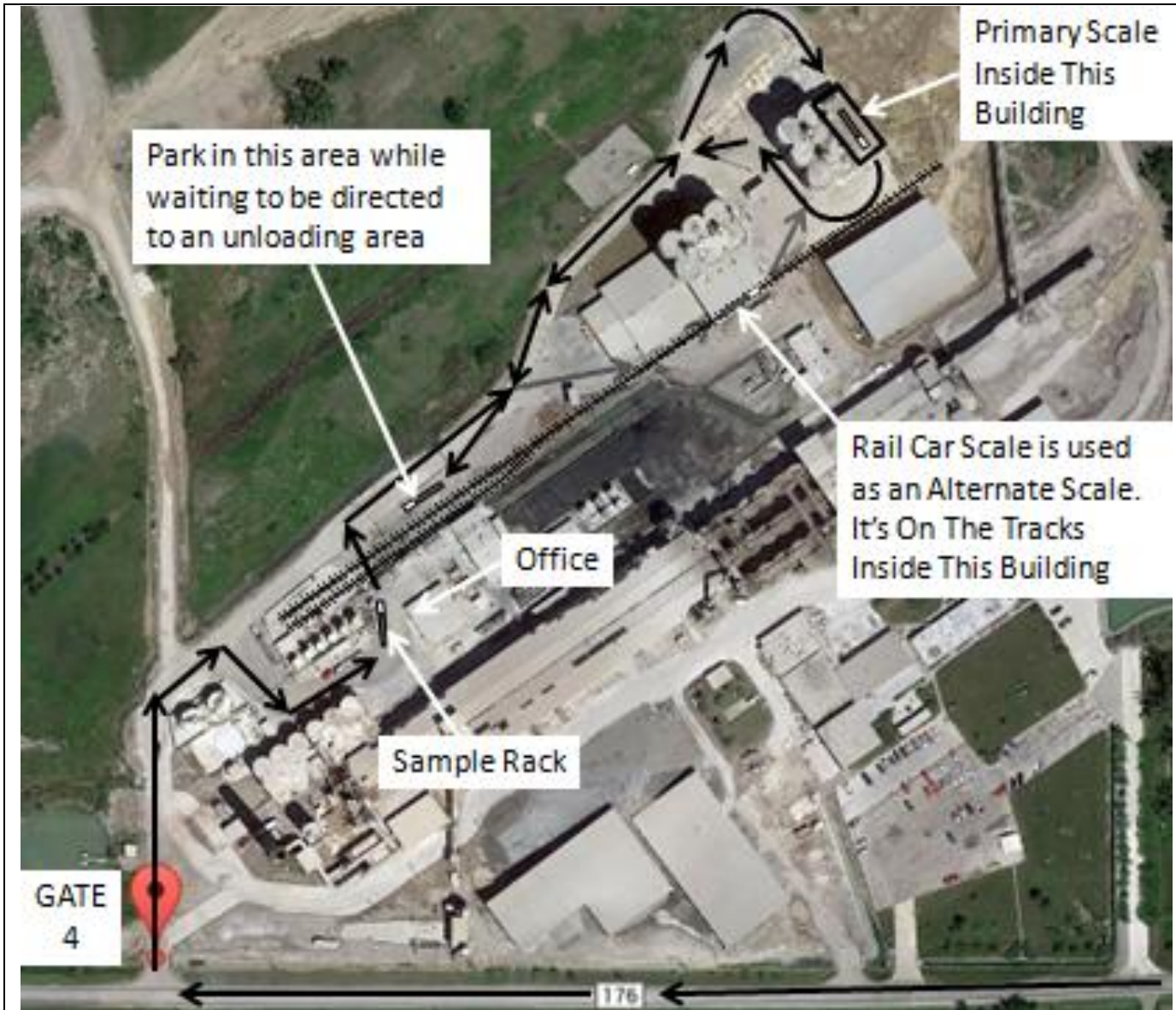
From: Fort Wayne, IN I-469 Exit 21				
	E	US-24	24	X 13
R			LAFARGE	
	S	US-127	2.7	Sign
R			Gate 4	
	W	Rd-176	1.3	RHS



Most US routes in OH are good for truck traffic. I've taken I-75 to both US-30 and US-33 to get to US-127. There are a couple of small towns, but I would recommend using them. I've never taken I-75 to US-224 nor I-80 / I-90 to OH-15, but If coming from those directions, I would try them.

# Systech Environmental Corp

1139 Rt. 176  
Paulding, OH, OH 45879  
41.179526,-84.607479



1. Go Into Gate 4 and park under the sample rack. If someone is under the sample rack just park in line behind him. Turn in your paperwork as soon as you get stopped. The people who sample your load use your paperwork to decide what equipment to bring out to your truck. If another trucker comes in behind you and turns in his paperwork ahead of you, it may delay your sampling. The folks in the office will give you a piece of paper with a number on it.
2. After being sampled go to the scale. Each time you scale, the number needs to be visible to the scale master.
3. After scaling wait beside the tracks as shown above until someone comes and tells you where to go.

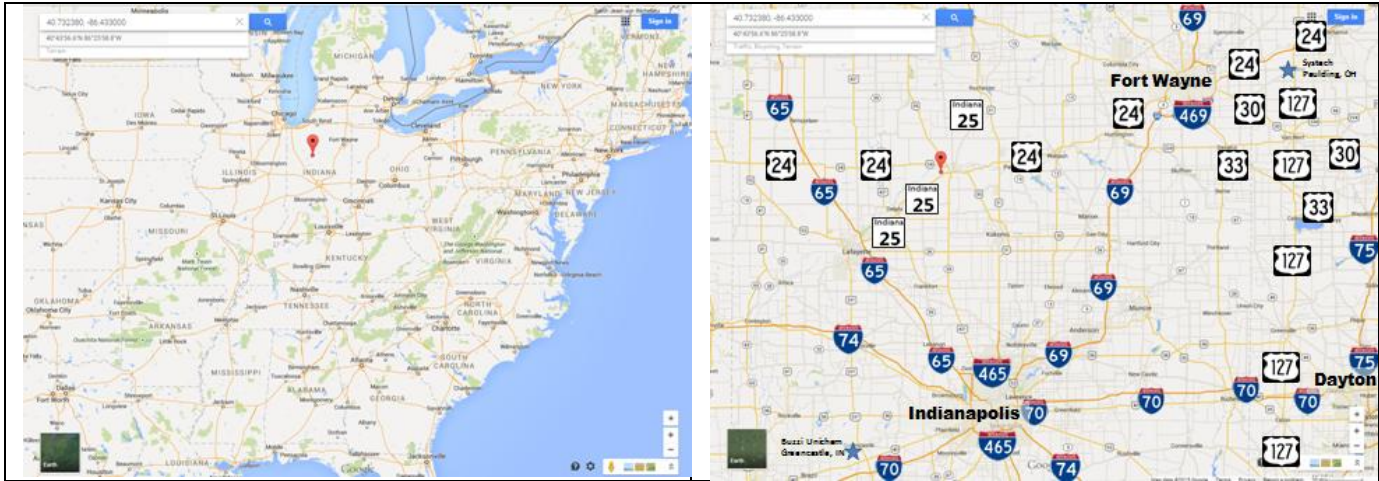




4. After getting unloaded, go scale out. Don't forget your paper with the number on it must be visible to the scale master.
5. After scaling out, drive around the outside of the building and walk into the scale house entrance to pick up your scale ticket. It will be on a clipboard hanging from a string. Your ticket is the one with the number you showed the scale master.
6. Take your number and scale ticket back to the office to finish your paperwork.

# ESSROC Cement

3084 W. County Rd. 225 South  
Logansport, IN 46947  
40.732380, -86.433000



## DISCLAIMER

I'm updating this ESSROC set of directions on January 24, 2016. From looking at the satellite images I can see some construction is taking place and my old directions are no longer accurate. I haven't been to ESSROC in years and the roads have changed. Another problem I'm having is the new maps and satellite imagery are available but the street view is not, so I don't know what you'll see when you get to the Logansport, IN area. I will give you what I have today and hopefully it will be enough to help.



ESSROC is Southwest of Logansport IN. To come into this area from the East I suggest using US-24. When coming from the South or West use IL-25. It's a good road and it connects to I-65. Once coming from Indianapolis IN I took US-31 to US-35 and that way has a lot of lights. I suggest avoiding US-31 and use I-65 to IL-25 .



The above blow up map covers the area marked in the map on the previous page with a number 1.



The above blow up picture covers the area marked in the map on the previous page with a number 2.

	W	W Co Rd 300 S	423 Ft	
R			Sharp Left Curve	
	N	S Co Rd 275	0.9	after RR
ST				
	W	W Co Rd 225	0.3	RHS

Once on IN-25 go West on W Co Rd 300 S

# ESSROC Cement

3084 W. County Rd. 225 South

Logansport, IN 46947

40.732380, -86.433000

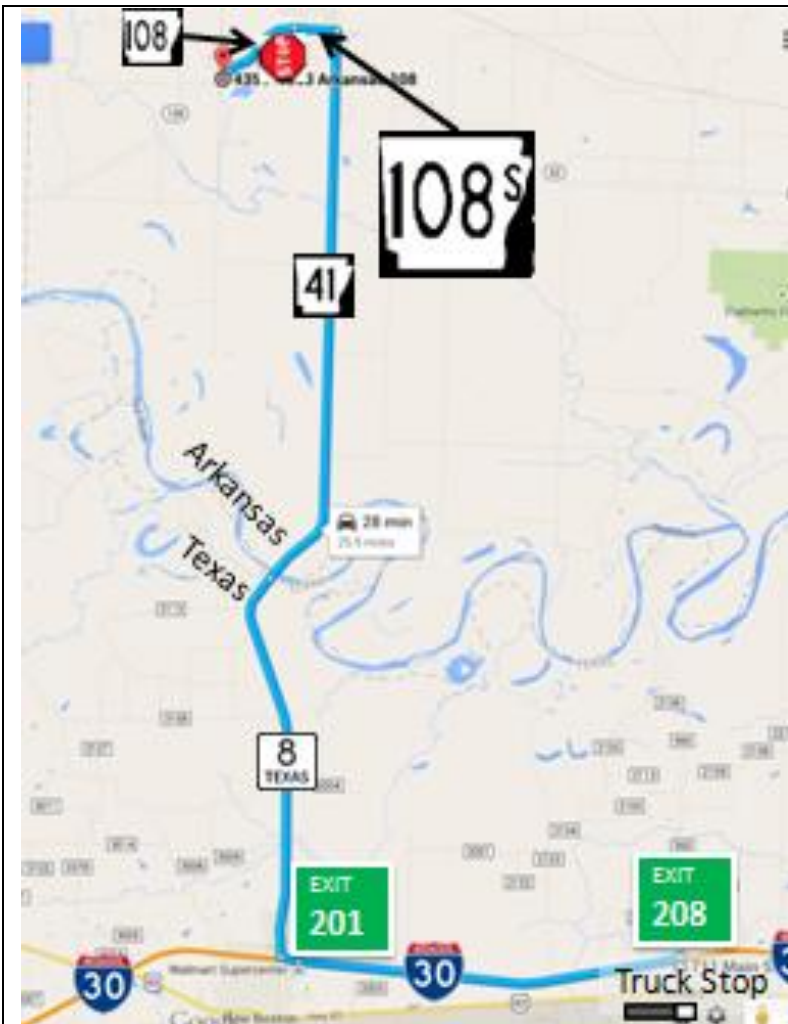


Once at the facility pull on the scale. If you have a CB call the office on channel 20. Once you are told to pull up go the office for further instructions.

**Blank Page**

# Ash Grove Cement

4457 Hwy 108  
 Forman, AR 17836  
 33.693127, -94.426534



From: Texas I-30 Exit 201			
N		State Line	
	TX-8	6.7	Bridge
N	ST AR-41	9.8	
W	L AR-108 Spur	0.7	T
W		After Tracks	
	L AR-108	1.6	LHS

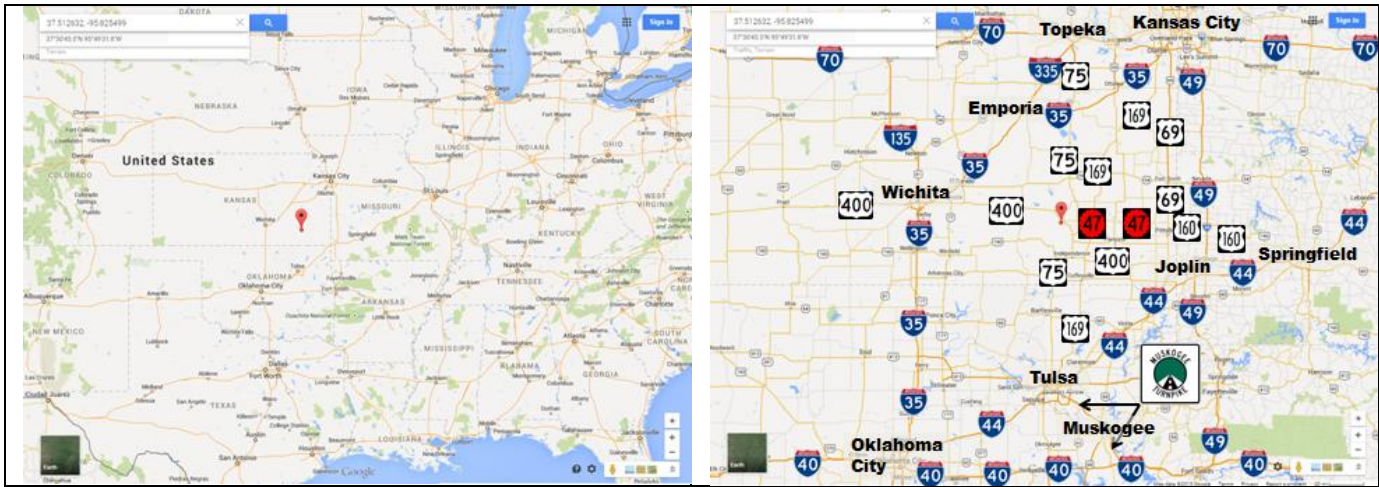
Easy to find. From I-30 Texas Exit 201 go North on Texas 8. 16.5 miles later you will see a sign for AR-108 Spur (108<sup>S</sup>). Go left and 0.7 miles later you will come to a stop sign. Turn Left again and after you cross the tracks it will be on your left. Just before the entrance you will see the green ASH GROVE CEMENT sign represented in the picture on the next page.



Scale yourself in. Then drive into the fenced area with the office and prepare to back in to get sampled. If nobody meets you go into the office and they will tell you what to do. Normally they will sample you in one of their bays, then have you park in the truck parking area and wait until they come and get you. In the past they had me turn off the Roberoller before unloading. I've heard that they now have hydraulic hoses that connect to the Roberoller to keep the blades inside the trailer moving without the engine running. I haven't personally seen it, but I have seen the alterations made to the Roberoller to accommodate this connection.

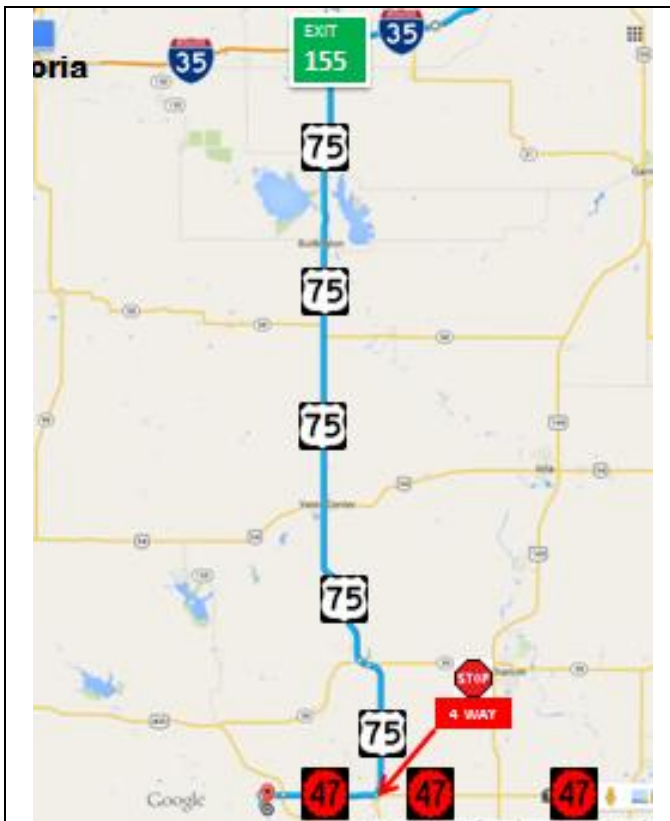
# System Environmental

South Cement Rd  
 Fredonia, KS 66736  
 37.512632, -95.825499



As you can see, this place is in the middle of nowhere. Because of that I will give you several ways to get there.

## From the North

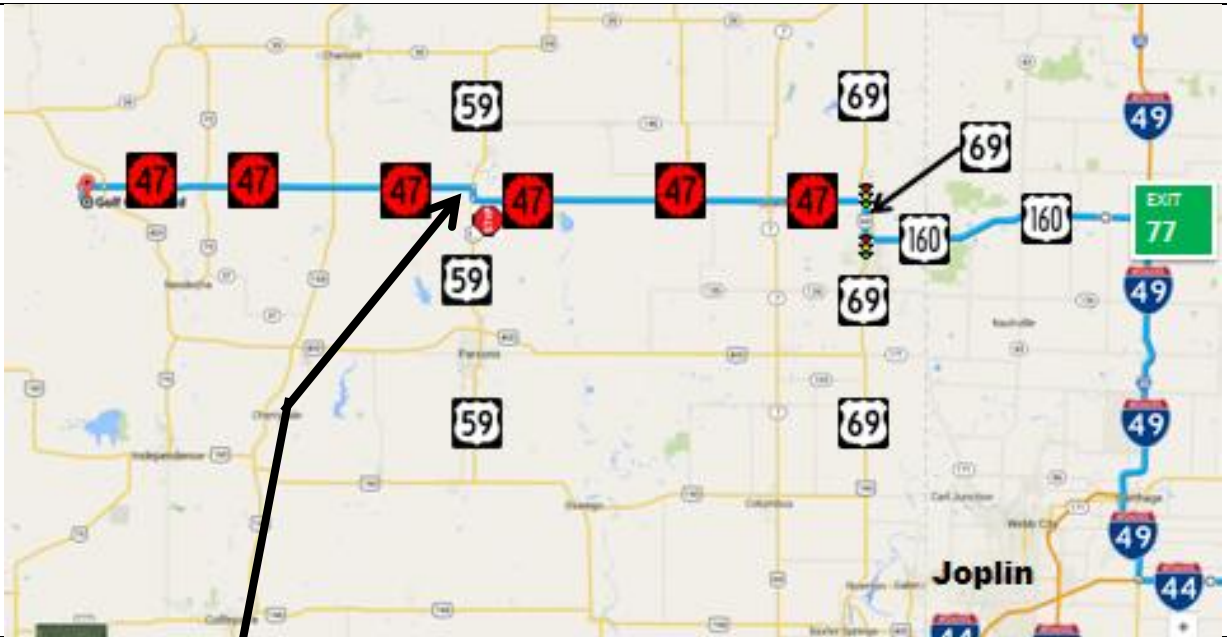


Lebo KS I-35 Exit 155			
			4-WAY
	S	US-75	64.9 SS
R			FREDONIA ↗ Sign
	W	KS-47	7.9 Traffic Circle
2nd			
EX		E Washington St	1.7 SS
L			Road Changes
		S 3rd St	0.5 Name
ST			LAFARGE
		Harper Rd	0.6 Sign LHS
L			LAFARGE signs
		Golf Course Rd	0.4 just after RR
R			ST into
		Drive	0.2 Gate

Flip 2 page to see Fredonia Map



From the East



Flip 2 page to see Fredonia Map

Lamar MO I-49 Exit 77			
	W US-160	22.8	LGT
R	N US-69	3	LGT
L	W KS-47	31	T
R	N US-59		
	W KS-47	0.9	
L		FREDONIA ↗ Sign	
	W KS-47	29.1	Traffic Circle
2nd			
EX	E Washington St	1.7	SS
L		Road Changes	
	S 3rd St	0.5	Name
ST		LAFARGE	
	Harper Rd	0.6	Sign LHS
L		LAFARGE signs	
	Golf Course Rd	0.4	just after RR
R		ST into	
	Drive	0.2	Gate

# System Environmental

South Cement Rd  
 Fredonia, KS 66736  
 37.512632, -95.825499

## From the West



Wichita KS I-35 Exit 50			
	E	US-400	20.8 XL
L			FREDONIA ↗ Sign
	E	US-400	61.7 Traffic Circle
1st			
EX		E Washington St	1.7 SS
L			Road Changes
		S 3rd St	0.5 Name
ST			LAFARGE
		Harper Rd	0.6 Sign LHS
L			LAFARGE signs
		Golf Course Rd	0.4 just after RR
R			ST into
		Drive	0.2 Gate

Flip page to see Fredonia Map

## From the South



OK I-40 Exit 286			
			Road Changes
	W	Muskogee TPKE	55.8 Name
ST		Broken Arrow Express	
		OK-51	6 X
R	N	US-169	70.3 LGT
L	N	US-169	24.4
L			FREDONIA ↗ Sign
	W	US-400	24.3 Traffic Circle
3rd			
EX		E Washington St	1.7 SS
L			Road Changes
		S 3rd St	0.5 Name
ST			LAFARGE
		Harper Rd	0.6 Sign LHS
L			LAFARGE signs
		Golf Course Rd	0.4 just after RR
R			ST into
		Drive	0.2 Gate



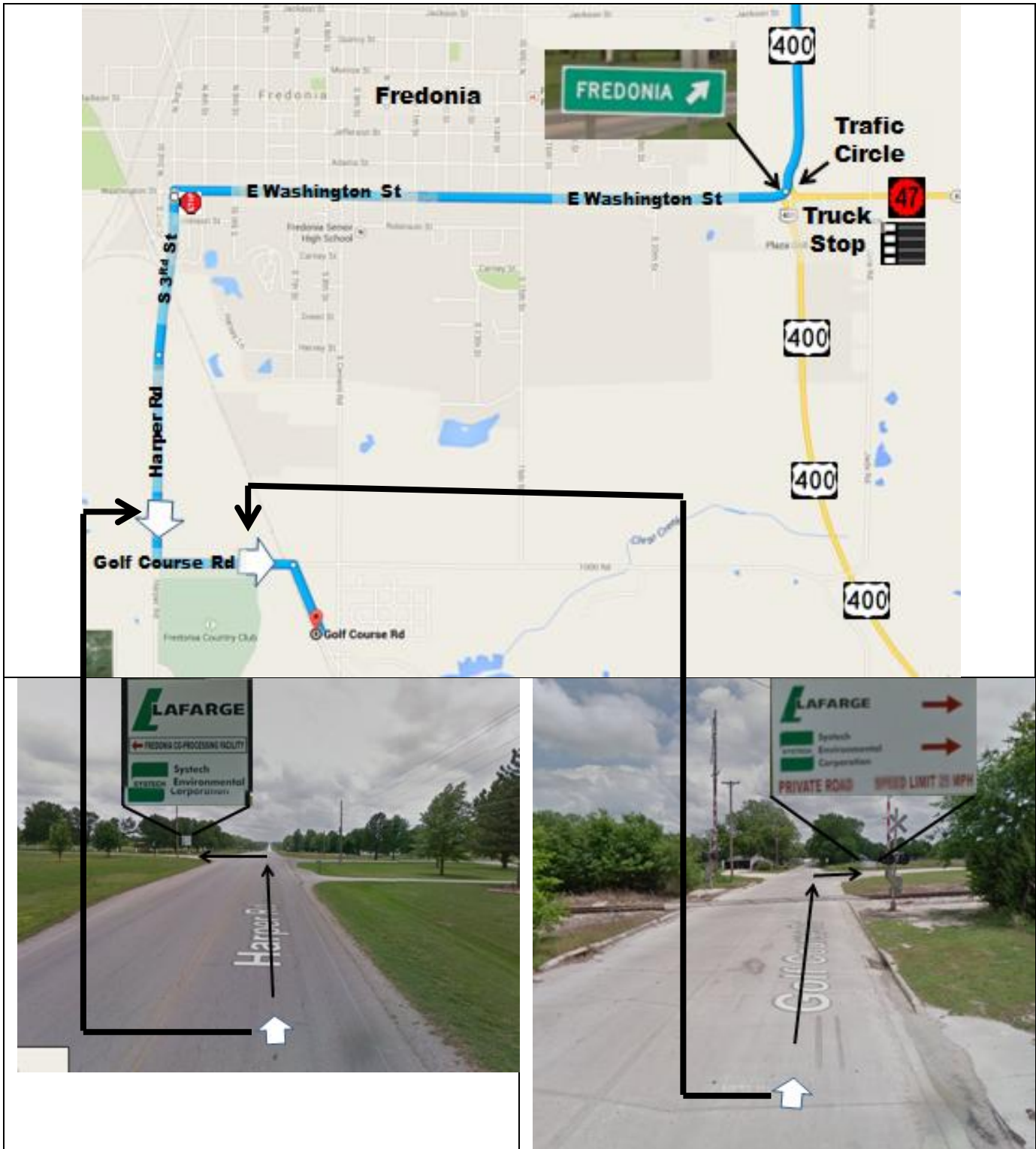
### Warning

E-Z Pass doesn't work on Muskogee Turnpike.  
You must pay **CASH** on this toll road.

Flip page to see Fredonia Map

# Systemch Environmental

South Cement Rd  
Fredonia, KS 66736  
37.512632, -95.825499



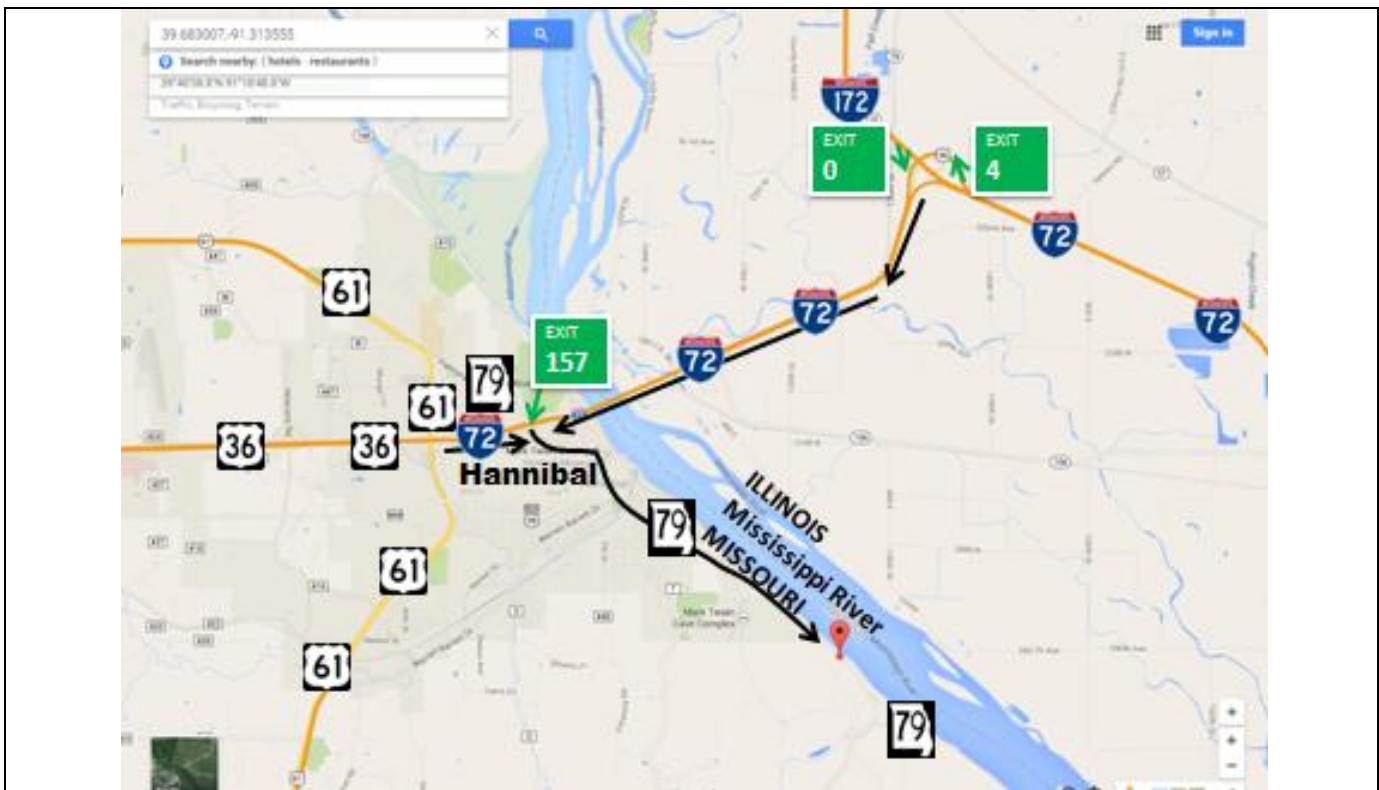
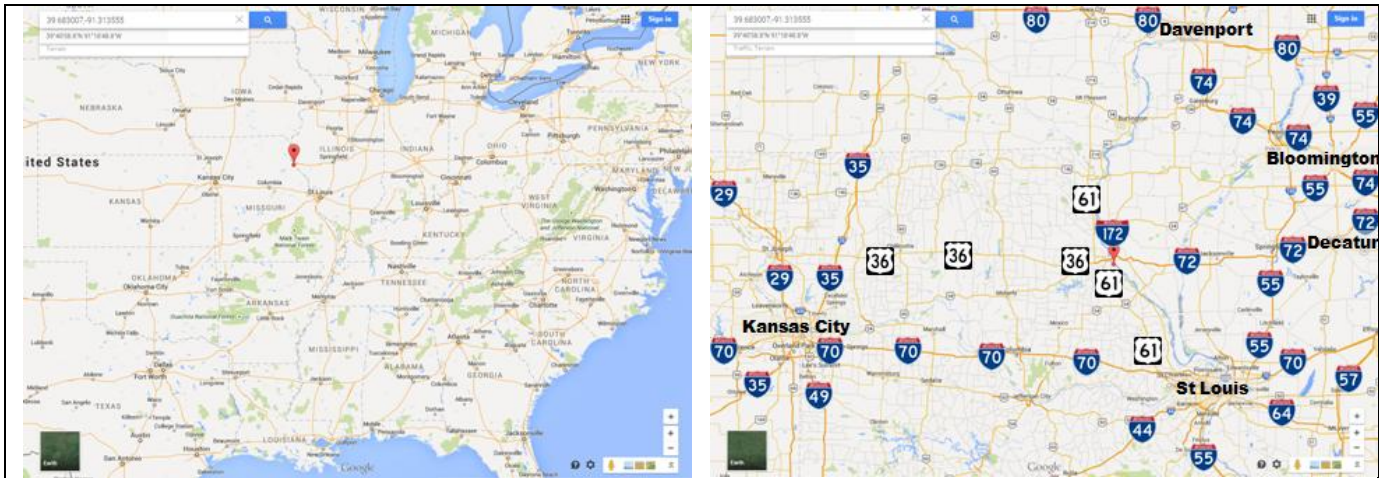
FREDONIA ↗ Sign			
EX	E Washington St	1.7	SS
L	S 3rd St	0.5	Road Changes Name
ST	Harper Rd	0.6	LAFARGE Sign LHS
L	Golf Course Rd	0.4	LAFARGE signs just after RR
R	Drive	0.2	ST into Gate



I've only been here a couple of times and that was almost 10 years ago. I don't remember the procedures, but I do remember you have to follow the instructions in the scale house to scale yourself in and out. As best as I can remember the sampling area is in the place marked on the picture.

# Green America Recycling

10107 Highway 79  
Hannibal, MO 63401  
39.683007,-91.313555



When I came up here I caught US-61 at St Louis MO. I went North on US-61 for 76.1 miles and turned right onto I-72 East. US-61 was a good drive. I suggest avoiding the small roads in the town of Hannibal MO trying to find a shortcut to MO-79.

Hannibal, MO I-72 Exit 157

			Guard Shack
S	MO-79	4	RHS

Easy to find just 4 miles down one road. After passing the Guard Shack go up the hill get on the scale and get the rest of your instructions from the scale master.



**This Page Intentionally Left Blank.**



**Sumter Transport Company  
Dispatch Information**

Bill To: \_\_\_\_\_

Order No \_\_\_\_\_

Driver \_\_\_\_\_

Tractor \_\_\_\_\_

Trailer \_\_\_\_\_

Reference # \_\_\_\_\_

Manifest/BOL # \_\_\_\_\_

Rev. Code \_\_\_\_\_

Beginning Odometer \_\_\_\_\_

Commodity \_\_\_\_\_

Ending Odometer \_\_\_\_\_

Total hours to do this trip: \_\_\_\_\_

Did you pay tolls? Yes No \_\_\_\_\_

**Shipper**

**Consignee**

\_\_\_\_\_  
\_\_\_\_\_  
\_\_\_\_\_  
\_\_\_\_\_

\_\_\_\_\_  
\_\_\_\_\_  
\_\_\_\_\_  
\_\_\_\_\_

**Loading Information**

**Unloading Information**

	Date	Time
Arrival		
Start		
Finish		
Depart		

	Date	Time
Arrival		
Start		
Finish		
Depart		

Shipper Signature \_\_\_\_\_

Consignee Signature \_\_\_\_\_

Did you use the pump? No Yes How Long? \_\_\_\_\_  
Did you vacuum? No Yes How Long? \_\_\_\_\_

Did you use the pump? No Yes How Long? \_\_\_\_\_  
Did you vacuum? No Yes How Long? \_\_\_\_\_

**Stop Detail**

**Tanker Information**

	Inches	Gallon	RCRA	Empty?	Signature	Release # (if not empty)
Pick Up			Yes	No	_____	
Load					_____	
Unload			Yes	No	_____	
Roberoller Tested at Pickup?	Yes	No	_____	_____	_____	
Trailer pH	_____		Date	Time	Signature	
Vacuum System Tested at Pickup?	Yes	No	Date	Time	Signature	

**Box Information**

Box # Delivered \_\_\_\_\_ Box # Picked Up \_\_\_\_\_ Box # Dumped & Returned \_\_\_\_\_

**FUEL AND OIL PURCHASES**

Fuel Tickets \_\_\_\_\_ Total Fuel Purchases \_\_\_\_\_ Total Oil Purchased \_\_\_\_\_ Tractor \_\_\_\_\_ Trailer \_\_\_\_\_

Driver's Signature \_\_\_\_\_