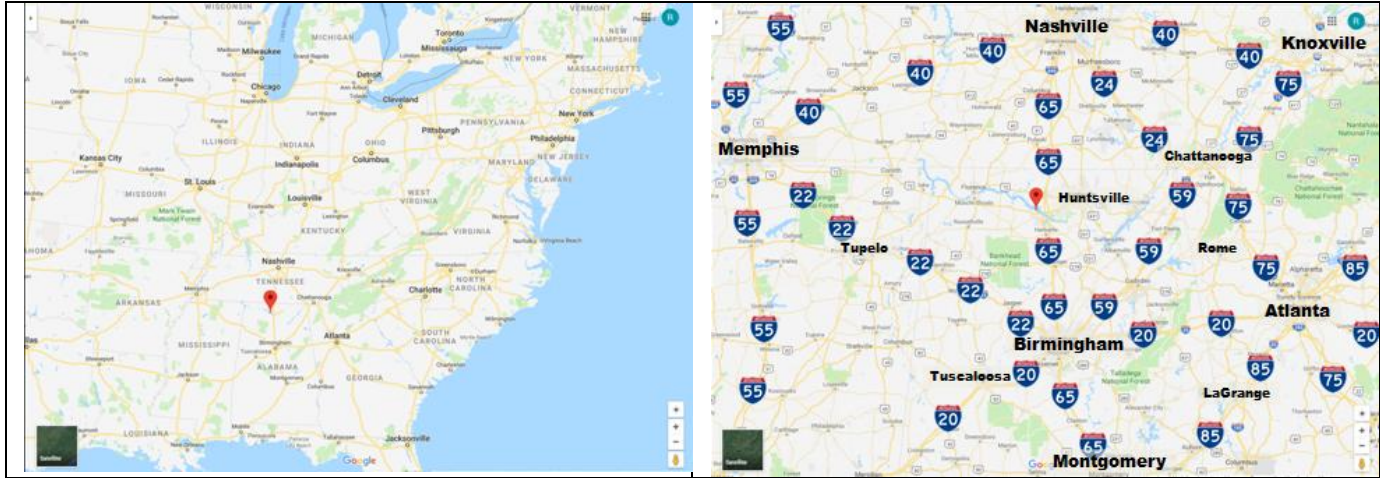


3M

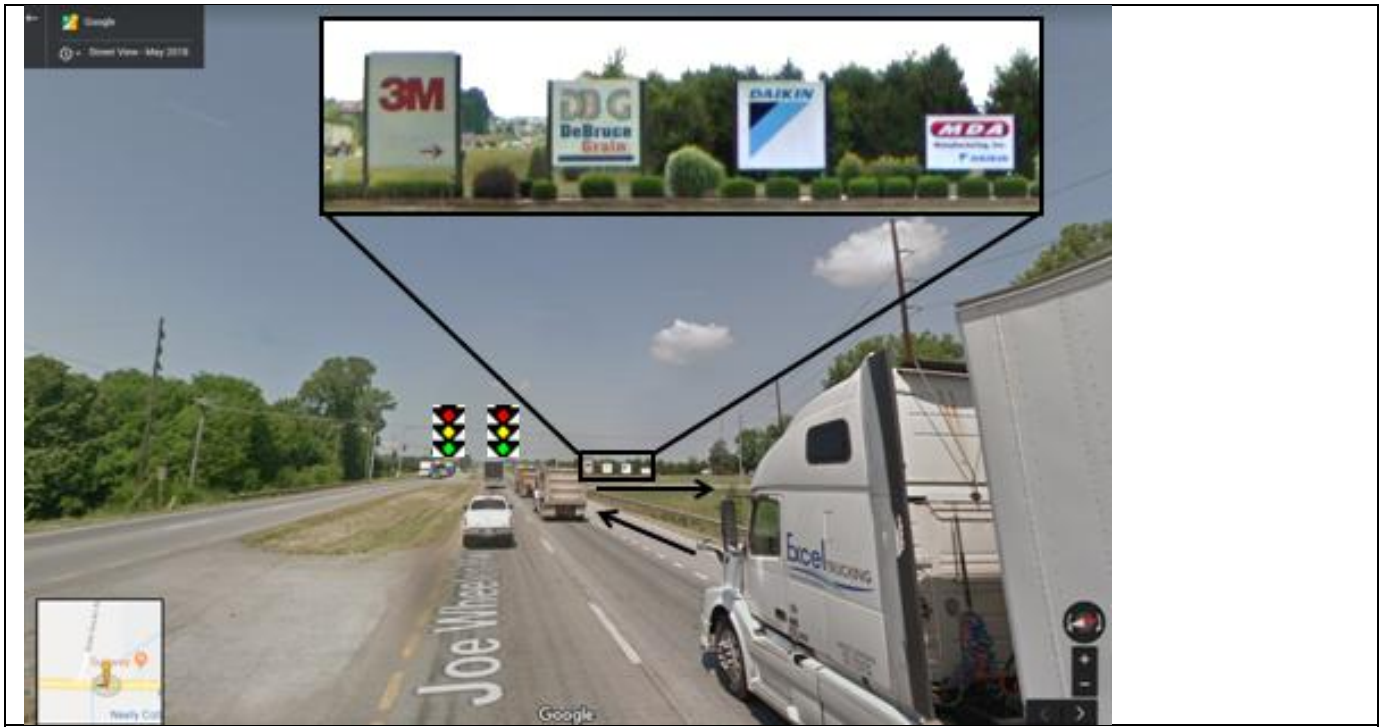
1400 State Docks Rd Bldg14-1
 Decatur, AL 35601
 34.640014,-87.038335



I-65 North Bound			
	N I-65		Exit 340 B
R	W AL-20	4.9	Light
R	W AL-20	3.9	Light
R	N State Docks Rd	~1.5	Guard Shack

If you take AL-20, as suggested, you have a lot fewer traffic lights than going on AL-67 or US-31.





When you approach State Docks Rd there will be a large 3M sign telling you where to turn



The trucks that I added to this picture are oversized so you can see them. When you get there you will have plenty of room to turn around and get in the dock.